

APPENDIX 2. Aligned 12S matrix (342bp), ambiguous regions that were excluded from the analyses are indicated by *.

[10	20	30	40	50	60	70]
[.]
	[12S rRNA start						
<i>Acizzia_hollisi</i>	GAGTAGTACAAGTTATTA	TCTTTAAACTCAAAAAA	TTGGCGGTATTTTATCTT	TATTAGAGGAACCTGT			[69]
<i>Acizzia_uncatoides</i>	GAGTAGTAAAGTTATG	TCTAGAACTCAAAAAA	TTGGCGGTATTTTATCTT	TACTCAGAGGAACCTGT			[69]
<i>Arytaina_adenocarpi_PO</i>	GAGTAGTAAGAGTTATGA	TCTTGAAACTCAAAAAA	TTGGCGGTATTTTATCTT	TACTAGAGGAACCTGT			[69]
<i>Arytaina_adenocarpi_SP</i>	GAGTAGTAAGAGTTATGA	TCTTGAAACTCAAAAAA	TTGGCGGTATTTTATCTT	TACTAGAGGAACCTGT			[69]
<i>Arytaina_adenocarpi_MO</i>	GAGTAGTAGTAGTTATGA	TCTTGAAACTCAAAAAA	TTGGCGGTATTTTATCTT	TACTAGAGGAACCTGT			[69]
<i>Arytaina_devia_ssp_insularis_C</i>	GAGTAGTAAAAGTTATGA	TCTTGAAACTCAAAAAA	TTGGCGGTATTTTATCTT	TACTAGAGGAACCTGT			[69]
<i>Arytaina_devia_ssp_insularis_P</i>	GAGTAGTAAAAGTTATGA	TCTTGAAACTCAAAAAA	TTGGCGGTATTTTATCTT	TACTAGAGGAACCTGT			[69]
<i>Arytaina_genistae_SC</i>	GAGTAGTAAGAGTTAAGG	TCTTGAAACTCAAAAAA	TTGGCGGTATTTTATCTT	TACTAGAGGAACCTGT			[69]
<i>Arytaina_genistae_PO</i>	GAGTAGTAAGAGTTAAGG	TCTTGAAACTCAAAAAA	TTGGCGGTATTTTATCTT	TACTAGAGGAACCTGT			[69]
<i>Arytaina_nubivaga</i>	GAGTAGTAAGAGTTATGA	TCTTGAAACTCAAAAAA	TTGGCGGTATTTTATCTT	TACTAGAGGAACCTGT			[69]
<i>Arytaina_sp.14</i>	GAGTAGTAAGAGTTATGA	TCTTGAAACTCAAAAAA	TTGGCGGTATTTTATCTT	TACTAGAGGAACCTGT			[69]
<i>Arytainilla_cognata</i>	GAGTAGTAAAAGATAAGA	TCTCGAAACTCAAAAAA	TTGGCGGTATTTTATCTA	TACTCAGAGGAACCTGC			[69]
<i>Arytainilla_cytisi</i>	GAGTAGTATAAGTTAAGA	TCTTGAAACTCAAAAAA	TTGGCGGTATTTTATCTT	TATTAGAGGAACCTGT			[69]
<i>Arytainilla_delarbrei</i>	GAGTAGTATCAGTTAAGA	TCTTGAAACTCAAAAAA	TTGGCGGTATTTTATCTT	TATTAGAGGAACCTGT			[69]
<i>Arytainilla_diluta</i>	GAGTAGTATAAGATAAGA	TCTCGAAACTCAAAAAA	TTGGCGGTATTTTATCTT	TATTAGAGGAACCTGC			[69]
<i>Arytainilla_dividens_C</i>	GAGTAGTATAAGATAAGA	TCTCGAAACTCAAAAAA	TTGGCGGTATTTTATCTT	TATTAGAGGAACCTGC			[69]
<i>Arytainilla_dividens_G</i>	GAGTAGTATAAGATAAGA	TCTCGAAACTCAAAAAA	TTGGCGGTATTTTATCTT	TATTAGAGGAACCTGC			[69]
<i>Arytainilla_equitans</i>	GAGTAGTAAAAGATAAGA	TCTCGAAACTCAAAAAA	TTGGCGGTATTTTATCTA	TACTCAGAGGAACCTGC			[69]
<i>Arytainilla_gredi</i>	GAGTAGTATAAGATAAGA	TCTCGAAACTCAAAAAA	TTGGCGGTATTTTATCTT	TATTAGAGGAACCTGT			[69]
<i>Arytainilla_hakani</i>	GAGTAGTATAAGATAAGA	TCTCGAACTCAAAAAA	TTGGCGGTATTTTATCTA	TACTCAGAGGAACCTGC			[69]
<i>Arytainilla_ima</i>	GAGTAGTAAAAGTTAAAT	TCTGAAACTCAAAAAA	TTGGCGGTATTTTATCTT	TATTAGAGGAACCTGT			[69]
<i>Arytainilla_incuba</i>	GAGTAGTATAAGATAAGA	TCTCGAAACTCAAAAAA	TTGGCGGTATTTTATCTA	TACTCAGAGGAACCTGC			[69]
<i>Arytainilla_modica_Teline_P</i>	GAGTAGTACAAGATAAGA	TCTCGAAACTCAAAAAA	TTGGCGGTATTTTATCTA	TACTCAGAGGAACCTGC			[69]
<i>Arytainilla_modica_Cham._P</i>	GAGTAGTACAAGATAAGA	TCTCGAAACTCAAAAAA	TTGGCGGTATTTTATCTA	TACTCAGAGGAACCTGC			[69]
<i>Arytainilla_nigralineata</i>	GAGTAGTATTAGATAAGA	TCTCGAAACTCAAAAAA	TTGGCGGTATTTTATCTT	TATTAGAGGAACCTGC			[69]
<i>Arytainilla_pileolata</i>	GAGTAGTATAAGATAAGA	TCTCGAAACTCAAAAAA	TTGGCGGTATTTTATCTA	TACTCAGAGGAACCTGC			[69]
<i>Arytainilla_proboscidea</i>	GAGTAGTATTAGATAAGA	TCTCGAAACTCAAAAAA	TTGGCGGTATTTTATCTT	TATTAGAGGAACCTGC			[69]
<i>Arytainilla_prognata</i>	GAGTAGTATAAGATAAGA	TCTCGAAACTCAAAAAA	TTGGCGGTATTTTATCTT	TATTAGAGGAACCTGC			[69]
<i>Arytainilla_spartiophila_PO</i>	GAGTAGTAGTAGTTAAGA	TCTTGAAACTCAAAAAA	TTGGCGGTATTTTATCTT	TATTAGAGGAACCTGT			[69]
<i>Arytainilla_spartiophila_SP</i>	GAGTAGTAGTAGTTAAGA	TCTTGAAACTCAAAAAA	TTGGCGGTATTTTATCTT	TATTAGAGGAACCTGT			[69]
<i>Arytainilla_sulci</i>	GAGTAGTAGAGTTAAGG	TCTCAAACTCAAAAAA	TTGGCGGTACTTTTATCTT	TATTAGAGGAACCTGT			[69]
<i>Arytainilla_umbonata</i>	GAGTAGTATAAGATAAGA	TCTCGAAACTCAAAAAA	TTGGCGGTATTTTATCTA	TACTCAGAGGAACCTGC			[69]
<i>Arytainilla_sp.1</i>	GAGTAGTACAAGTTAAGC	TCTTAAACTCAAAAAA	TTGGCGGTATTTTATCTT	TACTAGAGGAACCTGT			[69]
<i>Arytainilla_sp.2</i>	GAGTAGTATCTGTTAAGA	TCTGAAACTCAAAAAA	TTGGCGGTATTTTATCTA	TATTAGAGGAACCTGT			[69]
<i>Arytainilla_sp.3</i>	GAGTAGTATAAGTTAAGA	TCTTGAAACTCAAAAAA	TTGGCGGTATTTTATCTT	TATTAGAGGAACCTGT			[69]
<i>Arytainilla_sp.4</i>	GAGTAGTAAAAGTTAAGA	TCTTAAACTCAAAAAA	TTGGCGGTATTTTATCTT	TATTAGAGGAACCTGT			[69]
<i>Arytainilla_sp.5</i>	GAGTAGTATAAGATAAGA	TCTCGAAACTCAAAAAA	TTGGCGGTATTTTATCTT	TATTAGAGGAACCTGC			[69]
<i>Arytainilla_sp.6</i>	GAGTAGTAAAAGATAAGA	TCTCGAAACTCAAAAAA	TTGGCGGTACTTTTATCTT	TACTCAGAGGAACCTGC			[69]
<i>Arytainilla_sp.7</i>	GAGTAGTATAAGATAAGA	TCTCGAAACTCAAAAAA	TTGGCGGTATTTTATCTT	TATTAGAGGAACCTGC			[69]
<i>Arytainilla_sp.8</i>	GAGTAGTATAAGATAAGA	TCTCGAAACTCAAAAAA	TTGGCGGTATTTTATCTA	TACTCAGAGGAACCTGC			[69]
<i>Arytainilla_sp.9</i>	GAGTAGTATAAGATAAGA	TCTCGAAACTCAAAAAA	TTGGCGGTATTTTATCTA	TACTCAGAGGAACCTGC			[69]
<i>Arytainilla_sp.10</i>	GAGTAGTATAAGATAAGA	TCTCGAAACTCAAAAAA	TTGGCGGTATTTTATCTA	TACTCAGAGGAACCTGC			[69]
<i>Arytainilla_sp.11</i>	GAGTAGTATAAGATAAGA	TCTCGAAACTCAAAAAA	TTGGCGGTATTTTATCTA	TACTCAGAGGAACCTGC			[69]
<i>Arytainilla_sp.12</i>	GAGTAGTACAAGATAAGA	TCTCGAAACTCAAAAAA	TTGGCGGTATTTTATCTT	TATTAGAGGAACCTGC			[69]
<i>Arytainilla_sp.13</i>	GAGTAGTAAAAGATAAGA	TCTCGAAACTCAAAAAA	TTGGCGGTATTTTATCTA	TACTCAGAGGAACCTGC			[69]
<i>Cacopsylla_alaterni</i>	GAGTAGTAAAAGTTAAGA	TCTTGAAACTCAAAAAA	TTGGCGGTATTTTATCTT	TATTAGAGGAACCTGT			[69]
<i>Cacopsylla_mali</i>	GAGTAGTAGGAGTTAAGA	TCTTAAACTCAAAAAA	TTGGCGGTATTTTATCTT	TATTAGAGGAACCTGT			[69]
<i>Cyamophila_prohaskai</i>	GAGTAGTAAGAGTTAAGA	TCTTTAAACTCAAAAAA	TTGGCGGTATTTTATCTT	TACTCAGAGGAACCTGT			[69]
<i>Livilla_adusta</i>	GAGTAGTAGTAGATAAGA	TCTTTAAACTCAAAAAA	TTGGCGGTATTTTATCTT	TGTAGAGGAACCTGT			[69]
<i>Livilla_blandula</i>	GAGTAGTAATAGATAAGA	TCTTAAACTCAAAAAA	TTGGCGGTATTTTATCTT	TGTAGAGGAACCTGC			[69]
<i>Livilla_horvathi</i>	GAGTAGTAAGAGTTAAGA	TCTTTAAACTCAAAAAA	TTGGCGGTACTTTTATCTT	TATTAGAGGAACCTGC			[69]
<i>Livilla_maculipennis</i>	GAGTAGTAGTAGATAAGA	TCTTTAAACTCAAAAAA	TTGGCGGTATTTTATCTT	TATTAGAGGAACCTGC			[69]
<i>Livilla_maura</i>	GAGTAGTAATAGATAAGA	TCTTTAAACTCAAAAAA	TTGGCGGTATTTTATCTT	TGTAGAGGAACCTGC			[69]
<i>Livilla_monospermae</i>	GAGTAGTAAAAGTTAATA	TCTAGAACTCAAAAGAT	TTGGCGGTATTTTATCTT	TATTAGAGGAACCTGC			[69]
<i>Livilla_nervosa</i>	GAGTAGTAAGTGTAAAGG	TCTTTAAACTCAAAAAA	TTGGCGGTATTTTATCTT	TATTAGAGGAACCTGT			[69]
<i>Livilla_pseudoretamae</i>	GAGTAGTAAATAGATAAGA	TCTTCAACTCAAAAAA	TTGGCGGTATTTTATCTT	TGTAGAGGAACCTGC			[69]
<i>Livilla_pyrenaee</i>	GAGTAGTAGTAGATAAGA	TCTTTAAACTCAAAAAA	TTGGCGGTATTTTATCTT	TATTAGAGGAACCTGC			[69]
<i>Livilla_radiata</i>	GAGTAGTAAAAGTTAAGA	TCTTTAAACTCAAAAAA	TTGGCGGTATTTTATCTT	TATTAGAGGAACCTGC			[69]
<i>Livilla_retamae</i>	GAGTAGTAAAAGTTAATA	TCTAGAACTCAAAAGAT	TTGGCGGTATTTTATCTT	TATTAGAGGAACCTGC			[69]
<i>Livilla_spectabilis</i>	GAGTAGTATAAGTTATGA	TCTTTAAACTCAAAAAA	TTGGCGGTACTTTTATCTT	TACTCAGAGGAACCTGC			[69]
<i>Livilla_syriaca</i>	GAGTAGTAGGAGTTAAGA	TCTTTAAACTCAAAAAA	TTGGCGGTATTTTATCTT	TATTAGAGGAACCTGC			[69]
<i>Livilla_variegata</i>	GAGTAGTAAGAGTTAAGA	TCTTTAAACTCAAAAAA	TTGGCGGTATTTTATCTT	TGTAGAGGAACCTGC			[69]
<i>Livilla_vicina</i>	GGGTAGTATAAGTTAAA	TCTTTAAACTCAAAAGAT	TTGGCGGTATTTTATCTA	TATTAGAGGAACCTGT			[69]
<i>Livilla_vittipennella</i>	GAGTAGTAAGAGTTAAGA	TCTTTAAACTCAAAAAA	TTGGCGGTATTTTATCTT	TATTAGAGGAACCTGC			[69]
<i>Livilla_sp.15</i>	GAGTAGTATTAGCTAAA	TCTTGAAACTCAAAAAA	TTGGCGGTATTTTATCTT	TATTAGAGGAACCTGT			[69]
<i>Livilla_sp.16</i>	GAGTAGTATAAGTTAATA	TCTTCAACTCAAAAAA	TTGGCGGTATTTTATCTT	TATTAGAGGAACCTGT			[69]
<i>Livilla_sp.17</i>	GAGTAGTAAAAGTTAAGA	TCTGAAACTCAAAAAA	TTGGCGGTATTTTATCTT	TATTAGAGGAACCTGT			[69]
<i>Pseudacanthopsylla_improvisa</i>	GAGTAGTAATAGTTAAGA	TCTTGAAACTCAAAAAA	TTGGCGGTATTTTATCTT	TATTAGAGGAACCTGT			[69]

APPENDIX 2 cont.

	80	90	100	110	120	130	140]
Acizzia_hollisi							TTATTAATTGATAATCCACAACCTTAAATTTACTTTTAAAATTAT--ATTTGTATACCGCTGTCATGAATC [137]
Acizzia_uncatoides							TTAGTAATTGATATCCCAACCTTATATTTACTTTTATTATTAT--ATTTGTATACCGCTGTCATGAATC [137]
Arytaina_adenocarpi_PO							TTATTAATTGATACTCCACAACCTTAAATATATTTTCATTAGATT--ATTTGTATACCGTTGTCATGAATG [137]
Arytaina_adenocarpi_SP							TTATTAATTGATACTCCACAACCTTAAATATATTTTCATTAGATT--ATTTGTATACCGTTGTCATGAATG [137]
Arytaina_adenocarpi_MO							TTATTAATTGATACTCCACAACCTTAAATATATTTTCATTAAATTT--ATTTGTATACCGTTGTCATGAATG [137]
Arytaina_devia_ssp_insularis_C							TTATTAATTGATACTCCACAACCTTAAATATATTTTCATTAGATT--ATTTGTATACCGTTGTCATGAATG [137]
Arytaina_devia_ssp_insularis_P							TTATTAATTGATACTCCACAACCTTAACTTACTTTTCACTAGTTT--ATTTGTATACCGTTGTCATGAATG [137]
Arytaina_genistae_SC							TTATTAATTGATACTCCACAACCTTAAATATATTTTATTAGTTT--ATTTGTATACCGTTGTCATGAATA [137]
Arytaina_genistae_PO							TTATTAATTGATACTCCACAACCTTAAATATATTTTATTAGTTT--ATTTGTATACCGTTGTCATGAATA [137]
Arytaina_nubivaga							TTATTAATTGATACTCCACAACCTTAAATGATTTTCACTAGTTT--ATTTGTATACCGTTGTCATGAATG [137]
Arytaina_sp.14							TTATTAATTGATACTCCACAACCTTAAATGATTTTCACTAGTTT--ATTTGTATACCGTTGTCATGAATG [137]
Arytainilla_cognata							TTATTAATTGATACTCCACAACCTTAAATTTACTTTTATTAAATTT--ATTTGTATACCGCTGTCATGAATC [137]
Arytainilla_cytisi							TTATTAATTGATACTCCACAACCTTAAATTTACTTTTATTAAATTT--ATTTGTATACCGTTGTCATGAATC [137]
Arytainilla_delarbrei							TTATTAATTGATACTCCACAACCTTAAATTTTAAAGTTT--ATTTGTATACCGTTGTCATGAATC [137]
Arytainilla_diluta							TTATTAATTGATACTCCACAACCTTGAATTTACTTTTATTAAATTT--ATTTGTATACCGCTGTCATGAATC [137]
Arytainilla_dividens_C							TTATTAATTGATACTCCACAACCTTAAATTTACTTTTATTAAATTT--ATTTGTATACCGCTGTCATGAATC [137]
Arytainilla_dividens_G							TTATTAATTGATACTCCACAACCTTAAATTTACTTTTATTAAATTT--ATTTGTATACCGCTGTCATGAATC [137]
Arytainilla_equitans							TTATTAATTGATACTCCACAACCTTAAATTTACTTTTATTAAATTT--ATTTGTATACCGCTGTCATGAATC [137]
Arytainilla_gredi							TTATTAATTGATACTCCACAACCTTAAATTTACTTTTATTAAATTT--ATTTGTATACCGTTGTCATGAATC [137]
Arytainilla_hakani							TTATTAATTGATACTCCACAACCTTAAATTTACTTTTATTAAATTT--ATTTGTATACCGCTGTCATGAATC [137]
Arytainilla_ima							TTATTAATTGATACTCCACAACCTTAAATTTACTTTTATTAAATTT--ATTTGTATACCGTTGTCATGAATC [137]
Arytainilla_incuba							TTATTAATTGATACTCCACAACCTTAAATTTACTTTTATTAAATTT--ATTTGTATACCGCTGTCATGAATC [137]
Arytainilla_modica_Teline_P							TTATTAATTGATACTCCACAACCTTAAATTTACTTTTATTAAATTT--ATTTGTATACCGCTGTCATGAATC [137]
Arytainilla_modica_Cham._P							TTATTAATTGATACTCCACAACCTTAAATTTACTTTTATTAAATTT--ATTTGTATACCGCTGTCATGAATC [137]
Arytainilla_nigralineata							TTATTAATTGATACTCCACAACCTTAAATTTACTTTTATTAAATTT--ATTTGTATACCGCTGTCATGAATC [137]
Arytainilla_pileolata							TTATTAATTGATACTCCACAACCTTAAATTTACTTTTATTAAATTT--ATTTGTATACCGCTGTCATGAATC [137]
Arytainilla_proboscidea							TTATTAATTGATACTCCACAACCTTAAATTTACTTTTATTAAATTT--ATTTGTATACCGCTGTCATGAATC [137]
Arytainilla_prognata							TTATTAATTGATACTCCACAACCTTAAATTTACTTTTATTAAATTT--ATTTGTATACCGCTGTCATGAATC [137]
Arytainilla_spartiophila_PO							TTATTAATTGATACTCCACAACCTTAAATTTACTTTTACTAAATTT--ACTTGTATATCGTTGTCATGAATC [137]
Arytainilla_spartiophila_SP							TTATTAATTGATACTCCACAACCTTAAATTTACTTTTACTAAATTT--ACTTGTATATCGTTGTCATGAATC [137]
Arytainilla_ulci							TTATTAATTGATACTCCACAACCTTAAATTTACTTTTATTAAATTT--ATTTGTATACCGCTGTCATGAATG [137]
Arytainilla_umbonata							TTATTAATTGATACTCCACAACCTTAGACTTACTTTTATTAAATTT--ATTTGTATACCGCTGTCATGAATC [137]
Arytainilla_sp.1							TTATTAATTGATAGTCCACAACCTTAAATTTACTTTTATTAAATTT--ATTTGTATACCGTTGTCATGAATC [137]
Arytainilla_sp.2							TTATTAATTGATACTCCACAACCTTAAATTTACTTTTATTAAATTT--ATTTGTATACCGCTGTCATGAGTC [137]
Arytainilla_sp.3							TTATTAATTGATACTCCACAACCTTAAATTTACTTTTATTAAATTT--ATTTGTATACCGTTGTCATGAATC [137]
Arytainilla_sp.4							TTATTAATTGATACTCCACAACCTTAAATTTACTTTTATTAAATTT--ATTTGTATACCGCTGTCATGAATC [137]
Arytainilla_sp.5							TTATTAATTGATACTCCACAACCTTAAATTTACTTTTATTAAATTT--ATTTGTATACCGCTGTCATGAATC [137]
Arytainilla_sp.6							TTATTAATTGATACTCCACAACCTTAAATTTACTTTTATTAAATTT--ATTTGTATACCGCTGTCATGAATC [137]
Arytainilla_sp.7							TTATTAATTGATACTCCACAACCTTAAATTTACTTTTATTAAATTT--ATTTGTATACCGCTGTCATGAATC [137]
Arytainilla_sp.8							TTATTAATTGATACTCCACAACCTTAAATTTACTTTTATTAAATTT--ATTTGTATACCGCTGTCATGAATC [137]
Arytainilla_sp.9							TTATTAATTGATACTCCACAACCTTAAATTTACTTTTATTAAATTT--ATTTGTATACCGCTGTCATGAATC [137]
Arytainilla_sp.10							TTATTAATTGATACTCCACAACCTTAAATTTACTTTTATTAAATTT--ATTTGTATACCGCTGTCATGAATC [137]
Arytainilla_sp.11							TTATTAATTGATACTCCACAACCTTAAATTTACTTTTATTAAATTT--ATTTGTATACCGCTGTCATGAATC [137]
Arytainilla_sp.12							TTATTAATTGATACTCCACAACCTTAAATTTACTTTTATTAAATTT--ATTTGTATACCGCTGTCATGAATC [137]
Arytainilla_sp.13							TTATTAATTGATACTCCACAACCTTAAATTTACTTTTATTAAATTT--ATTTGTATACCGCTGTCATGAATC [137]
Cacopsylla_alaterni							TTATTAATTGATACTCCACAACCTTAAATTTACTTTTATTAAATTT--ATTTGTATACCGCTGTCATGAATC [137]
Cacopsylla_mali							TTATTAATTGATACTCCACAACCTTAAATTTACTTTTACTAAGCT--ATTTGTATACCGCTGTCATGAATC [137]
Cyamophila_prohaskai							TTATTAATTGATACTCCACAACCTTAAATTTACTTTTACTGAGATT--ATTTGTATACCGCTGTCATGAATC [137]
Livilla_adusta							CTATTAATTGATACTCCACGACTTAAATTTACTTTTATTAAATTT--ATTTGTATACCGTTGTCATAAATC [137]
Livilla_blandula							TTATTAATTGATACTCCACGACTTAAATTTACTTTTATTAAATTT--ATTTGTATACCGTTGTCATAAATA [137]
Livilla_horvathi							TTATTAATTGATACTCCACGACTTAAATTTACTTTTATTAAATTT--ATTTGTATACCGTTGTCATAAATC [137]
Livilla_maculipennis							TTATTAATTGATACTCCACGACTTAAATTTACTTTTATTAAATTT--ATTTGTATACCGTTGTCATAAATC [137]
Livilla_maura							TTATTAATTGATACTCCACGACTTAAATTTACTTTTATTAAATTT--ATTTGTATACCGTTGTCATAAATA [137]
Livilla_monospermae							TTATTAATTGATGTTCCACAACCTTAACTTACTTTTATTGAGATT--ATTTGTATACCGTTGTCATGAATC [137]
Livilla_nervosa							TTATTAATTGATACTCCACAACCTTAAATTTACTTTTATTAAATTT--ATTTGTATACCGTTGTCATGAATC [139]
Livilla_pseudoretamae							TTATTAATTGATACTCCACGACTTAAATTTACTTTTATTAAATTT--ATTTGTATACCGTTGTCATAAATA [137]
Livilla_pyrenaea							TTATTAATTGATACTCCACGACTTAAATTTACTTTTATTAAATTT--ATTTGTATACCGTTGTCATAAATC [137]
Livilla_radiata							TCATTAATTGATACTCCACAACCTTAAATTTACTTTTATTAAATTT--ACTTGTATACCGTTGTCATGAATC [137]
Livilla_retamae							TTATTAATTGATACTCCACAACCTTAAATTTACTTTTATTGAAATTT--ATTTGTATACCGTTGTCATGAATC [137]
Livilla_spectabilis							TTATTAATTGATGTTCCACAACCTTAACTTACTTTTATTAAATTT--ATTTGTATACCGTTGTCATGAATC [137]
Livilla_syriaca							CCATTAATTGATACTCCACAACCTTAAATTTACTTTTATTAGATT--ATTTGTATACCGTTGTCATGAATC [137]
Livilla_variegata							TTATTAATTGATGTTCCACGACTTAAATTTACTTTTATTAAATTT--ATTTGTATACCGTTGTCATAAATC [137]
Livilla_vicina							TTATTAATTGATACTCCACAACCTTAAATTTACTTTTATTAAATTT--ATTTGTATACCGTTGTCATGAATC [137]
Livilla_vittipennella							TTATTAATTGATACTCCACGACTTAACTTACTTTTATTAAATTT--ATTTGTATACCGTTGTCATGAATC [137]
Livilla_sp.15							TTATTAATTGATGTTCCACAACCTTAAATTTACTTTTATTAAATTT--ATTTGTATACCGTTGTCATGAATC [137]
Livilla_sp.16							TTGTTAATTGATACTCCACAACCTTAAATTTACTTTTATTAAATTT--ATTTGTATACCGTTGTCATGAATC [137]
Livilla_sp.17							TTATTAATTGATACTCCACAACCTTAAATTTACTTTTACTAAGATT--ATTTGTATACCGTTGTCATGAATC [137]
Pseudacanthopsylla_improvisa							TTATTAATTGATACTCCACAACCTTAAATTTACTTTTATTAAATTT--ATTTGTATACCGTTGTCATGAATC [137]

APPENDIX 2 cont.

[150	160	170	180	190	200	210]
[.]

Acizzia_hollisi	TATTAAGAAATTTTATTTTCTATCATTTAT-A-TAAAATTTATGTTAGGTCAAGGTGCAGTA-TTTAAAA						[204]
Acizzia_uncatoides	TATTAAGAAATTTTATTTTCCGTTATTTCTT-A-TGGAATACATGTTAGGTCAAGGTGCAGTG-TGTAAAA						[204]
Arytaina_adenocarp_i_PO	TACTAAAAAGTGT-ATTTTCAAGATTTTTT-A-TATAATTTATGTTAGATCAAGGTGCAGTC-TGTGAGA						[203]
Arytaina_adenocarp_i_SP	TACTAAAAAGTGT-ATTTTCAAGATTTTTT-A-TATAATTTATGTTAGATCAAGGTGCAGTC-TGTGAGA						[203]
Arytaina_adenocarp_i_MO	TACTAAAAAGTGT-ATTTTCAAGATTTTTT-A-TATAATTTATGTTAGATCAAGGTGCAGTC-TGTGAGA						[203]
Arytaina_devia_ssp_insularis_C	TACTAAAAAGTGT-ATTTTCAAGATTTTTT-A-TATAATTTATGTTAGATCAAGGTGCAGTC-TGTGAAA						[203]
Arytaina_devia_ssp_insularis_P	TACTAAAAAGTGT-ATTTTCAAGATTTTTT-A-TATAATTTATGTTAGATCAAGGTGCAGTC-TGTGAAA						[203]
Arytaina_genistae_SC	TACTAAAAAGT-ATTTTCAAGATTTTTT-A-TGTAATTTATGTTAGATCAAGGTGCAGTT-TGTAAAA						[203]
Arytaina_genistae_PO	TACTAAAAAGT-ATTTTCAAGATTTTTT-A-TGTAATTTATGTTAGATCAAGGTGCAGTT-TGTAAAA						[203]
Arytaina_nubivaga	TACTAAAAAGTGT-ATTTTCAAGATTTTTT-A-TATAATTTATGTTAGATCAAGGTGCAGTT-TGTGAAA						[203]
Arytaina_sp.14	TACTAAAAAGTGT-ATTTTCAAG-ATTTCCCTA-TATAGTTTATGTTAGATCAAGGTGCAGTT-TGTGAAA						[203]
Arytainilla_cognata	TACTAAAAAGTGT-ATTTTCAAGGTTTTT-A-TTTAATTTATGTTAGATCAAGGTGCAGTT-TGTAAAA						[202]
Arytainilla_cytisi	TACTGAAAAGT--AATTTTCAAGATTTTTT-A-TATAATTTATGTTAGATCAAGGTGCAGTT-TGTAAAA						[202]
Arytainilla_delarbrei	TACTAGAAAAGT--AATTTTCAAGATTTTTT-A-TATAATTTATGTTAGATCAAGGTGCAGTT-TATGAAA						[202]
Arytainilla_diluta	TACTAAAAAGT--AATTTTCAAGGTTTTT-A-TGTAATTTATGTTAGATCAAGGTGCAGTT-TTTAAAA						[202]
Arytainilla_dividens_C	TACTAAAAAGT--AATTTTCAAGGTTTTT-A-TAAAATTTATGTTAGATCAAGGTGCAGTT-TTTAAAA						[202]
Arytainilla_dividens_G	TACTAAAAAGT--AATTTTCAAGGTTTTT-A-TAAAATTTATGTTAGATCAAGGTGCAGTT-TTTAAAA						[202]
Arytainilla_equitans	TACTAAAAAGT--AATTTTCAAGGTTTTT-A-TATAATTTATGTTAGATCAAGGTGCAGTT-TATAAAA						[202]
Arytainilla_gredi	TACTAAAAAGT--AATTTTCAAGGTTTTT-A-TAAAATTTATGTTAGATCAAGGTGCAGTT-TTTAAAA						[202]
Arytainilla_hakani	TACTAAAAAGT--AATTTTCAAGGTTTTT-A-TGTAATTTATGTTAGATCAAGGTGCAGTT-TTTAAAA						[202]
Arytainilla_ima	TATTAAGAAAT--AATTTTCAAGATTTTTT-A-TGGAATATATGTTAGATCAAGGTGCAGTT-TTTAAAA						[202]
Arytainilla_incuba	TACTAAAAAGTGT-ATTTTCAAGGTTTTT-A-TGTAATTTATGTTAGATCAAGGTGCAGTT-TTTAAAA						[202]
Arytainilla_modica_Teline_P	TACTAAAAAGT--AATTTTCAAGGTTTTT-A-TAAAATTTATGTTAGATCAAGGTGCAGTT-TTTGAAA						[202]
Arytainilla_modica_Cham_P	TACTAAAAAGT--AATTTTCAAGGTTTTT-A-TAAAATTTATGTTAGATCAAGGTGCAGTT-TTTGAAA						[202]
Arytainilla_nigralineata	TACTAGAAAAGT--ATTTTCAAGGTTTTT-A-TATAATTTATGTTAGATCAAGGTGCAGTT-TTTAAAA						[202]
Arytainilla_pileolata	TACTAAAAAGT--AATTTTCAAGGTTTTT-A-TAAAATTTATGTTAGATCAAGGTGCAGTT-TTTAAAA						[202]
Arytainilla_proboscidea	TACTAGAAAAGT--AATTTTCAAGGTTTTT-A-TATAATTTATGTTAGATCAAGGTGCAGTT-TTTAAAA						[202]
Arytainilla_prognata	TATTAAGAAAGT--AATTTTCAAGATTTTTT-A-TGTAATTTATGTTAGATCAAGGTGCAGTT-TTTAAAA						[202]
Arytainilla_spartiophila_PO	TATTAAGAAAGTGT-ATTTTCAAGATTTTTT-A-TAAAATTTATGTTAGATCAAGGTGCAGTC-TGTAAAA						[202]
Arytainilla_spartiophila_SP	TATTAAGAAAGTGT-ATTTTCAAGATTTTTT-A-TAAAATTTATGTTAGATCAAGGTGCAGTC-TGTAAAA						[202]
Arytainilla_sp.1	TACTAAAAAGT--AATTTTCAAGGTTTTT-A-TAAAATTTATGTTAGATCAAGGTGCAGTT-TTTAAAA						[202]
Arytainilla_sp.2	TACTAAAAAGT--AATTTTCAAGGTTTTT-A-TATAATTTATGTTAGATCAAGGTGCAGTT-TATAGAA						[202]
Arytainilla_sp.3	TACTAAAAAGT--AATTTTCAAGATTTTTT-A-TATAATTTATGTTAGATCAAGGTGCAGTT-TGTGAAA						[202]
Arytainilla_sp.4	TACTAAAAAGT--AATTTTCAAGATTTTTT-A-TAAAATTTATGTTAGATCAAGGTGCAGTA-TTTAAAG						[202]
Arytainilla_sp.5	TACTAAAAAGT--AATTTTCAAGGTTTTT-A-TATAATTTATGTTAGATCAAGGTGCAGTT-TTTAAAA						[202]
Arytainilla_sp.6	TACTAAAAAGT--AATTTTCAAGGTTTTT-A-TATAATTTATGTTAGATCAAGGTGCAGTT-TTTAAAA						[202]
Arytainilla_sp.7	TACTAAAAAGT--AATTTTCAAGGTTTTT-A-TATAATTTATGTTAGATCAAGGTGCAGTT-TATAAAA						[202]
Arytainilla_sp.8	TACTAAGAAGT--AATTTTCAAGGTTTTT-A-TAAAATTTATGTTAAATCAAGGTGCAGTT-TTTAAAA						[202]
Arytainilla_sp.9	TACTAAAAAGT--AATTTTCAAGGTTTTT-A-TAAAATTTATGTTAGATCAAGGTGCAGTT-TTTAAAA						[202]
Arytainilla_sp.10	TACTAAAAAGT--AATTTTCAAGGTTTTT-A-TATAATTTATGTTAGATCAAGGTGCAGTT-TTTAAAA						[202]
Arytainilla_sp.11	TACTAAAAAGT--AATTTTCAAGATTTTTT-A-TATAATTTATGTTAGATCAAGGTGCAGTT-TGTAAAA						[202]
Arytainilla_sp.12	TACTAAAAAGT--AATTTTCAAGGTTTTT-A-TAAAATTTATGTTAGATCAAGGTGCAGTT-TTTGAAA						[202]
Arytainilla_sp.13	TATTAAGAAAGTGT-ATTTTCAAGGTTTTT-A-TTTAATTTATGTTAGATCAAGGTGCAGTT-TTTAAAA						[202]
Cacopsylla_alaterni	TACTAAAAAGTGT-ATTTTCAAGATTTTTT-A-TGCAAGTTATGTTAGGTCAAGGTGTAGTA-TATAGAA						[203]
Cacopsylla_mali	TACTTAGAAGTTT-ATTTTCAAGATTTTTT-A-TGTAATTTATGTTAGGTCAAGGTGCAGTA-TGTAGAC						[203]
Cyamophila_prohaskai	TACTTAAAAAGT--AATTTTCAAGGTTTTT-A-TGAAAGTCATGTTAGGTCAAGGTGCAGTT-TGTGTTG						[202]
Livilla_adusta	TACTAAAAAGTGT-ATTTTCAAGGTTTTT-A-TATAATTTATGTTAGATCAAGGTGCAGTT-TTTAGAA						[203]
Livilla_blandula	TACTAAAAAGT--AATTTTCAAGGTTTTT-A-TATAATTTATGTTAGATCAAGGTGCAGTT-TTTAAAA						[202]
Livilla_horvathi	TACTAAGAAGT--AATCTTTAAGAAATTTTT-AATAGAATTCATGTTAAATCAAGGTGCAGTT-TTTAAAA						[203]
Livilla_maculipennis	TACTAAAAAGT--AATCTTTAAGCATTTTTT-A-TGAAATTTATGTTAGATCAAGGTGCAGTT-TTTAAAA						[202]
Livilla_maura	TACTAAAAAGT--AATTTTCAAGGTTTTT-A-TATAATTTATGTTAGATCAAGGTGCAGTT-TTTAAAA						[202]
Livilla_monospermae	TACTAAAAAGT--AATTTTCAAGGTTTTT-A-TAGAATTTATGTTAGATCAAGGTGCAGTA-TTTAAAA						[202]
Livilla_nervosa	TACTAAAAAGTGT-AA-TTTCAAGGTTTTT-ATTATAATTTATGTTAGATCAAGGTGCAGTG-TTAAAAA						[205]
Livilla_pseudoretamae	TACTAAAAAGT--AATTTTCAAGGTTTTT-A-TATAATTTATGTTAGATCAAGGTGCAGTT-TTTAAAA						[202]
Livilla_pyrenaea	TACTAAGAAGT--AATTTTCAAGATTTTTT-A-TATAATTTATGTTAGATCAAGGTGCAGTC-TTTAAAA						[202]
Livilla_radiata	TACTAAGAAGT--AATTTTCAAGGATTTCTT-A-TTTAATTTATGTTAGATCAAGGTGCAGTT-TTTAAAA						[202]
Livilla_retamae	TACTAAAAAGT--AATTTTCAAGGTTTTT-A-TAGAATTCATGTTAGATCAAGGTGCAGTA-TTTAAAA						[202]
Livilla_spectabilis	TACTAAAAAGT--AATTTTCAAGATTTTTT-A-TGTAATTTATGTTAGATCAAGGTGCAGTT-TTTGAAA						[202]
Livilla_syriaca	TACTAAAAAGT--AATTTTCAAGATTTTTT-A-TATAATTTATGTTAGATCAAGGTGCAGTT-TTTAAAA						[202]
Livilla_variegata	TACTAAAAAGT--AATTTTCAAGGTTTTT-A-TAGAATTTATGTTAGATCAAGGTGCAGTT-TTTAAAA						[202]
Livilla_vicina	TACTAAAAAGT--AATTTTCAAGATTTTTT-A-TAAAATTTATGTTAGATCAAGGTGCAGTT-TTTAGAA						[202]
Livilla_vittipennella	TACTAAGAAGTGT-ATTTTCAAGATTTTTT-G-TATAATTTATGTTAGATCAAGGTGCAGTT-TTTAAAA						[202]
Livilla_sp.15	TATTAAGAAATGT-ATTTTCAAGATTTTTT-A-TGAAATTTATGTTAGATCAAGGTGCAGTA-TTTAAAA						[202]
Livilla_sp.16	TATTAAGAAAT--AATTTTCAAGATTTTTT-A-TGAAATTTATGTTAGATCAAGGTGCAGTT-TTTAAAA						[202]
Livilla_sp.17	TATTAAGAAAT--AATTTTCAAGGTTTTT-A-TTTAATTTATGTTAGATCAAGGTGCAGTT-TTTGAAA						[202]
Pseudacanthopsylla_improvisa	TATTAAGAAAT--AATTTTCAATTTTTTTTT-A-TGGAATGCATGTTAGATCAAGGTGCAGTT-TTTAAAA						[202]

APPENDIX 2 cont.

	220	230	240	250	260	270	280]

Acizzia_hollisi	GTTT	TA	ATAATGAATG	AAATTTAGATT	T	TTTTTTTGGAAA	AGGA [269]
Acizzia_uncatoides	GTTATA	AATGGGTTACTTTAGTATC	ATGAATGAAATAAAATATAA	AAAA	CTGTTATGAAATAGGA		[269]
Arytaina_adenocarpi_PO	AAG-TAAAATGGGTTACAAATATTTAATATGAATGAAATTTATTCTTA	GAAG	AATTTTAGAAAAAGGA				[269]
Arytaina_adenocarpi_SP	AAG-TAAAATGGGTTACAAATATTTAATATGAATGAAATTTATTCTTA	GAAG	AATTTTAGAAAAAGGA				[269]
Arytaina_adenocarpi_MO	AAG-TAAAATGGGTTACAAATATTTAATATGAATGAAATTTATTCTTA	AAAG	AATTTTAGAAAAAGGA				[269]
Arytaina_devia_ssp_insularis_C	GAA-CAAAATGGGTTACAAATATTTAATATGAATGAAATTTATTCTTA	ATAT	AGTGTAGAAAAGGA				[269]
Arytaina_devia_ssp_insularis_P	GAA-TAAAATGGGTTACAAATATTTAGTATGAATGAAAGCATTTTA	ATAT	TATGCTAGAAAAGGA				[269]
Arytaina_genistae_SC	GTA-TAGAATGGGTTACAAATATTTAATATGAATGAAATTTATTCTTA	AAAT	AATATTAGAAAAAGGA				[269]
Arytaina_genistae_PO	GTA-TAGAATGGGTTACAAATATTTAATATGAATGAAATTTATTCTTA	AAAT	AATATTAGAAAAAGGA				[269]
Arytaina_nubivaga	AAA-TAAAATGGGTTACAGTATTTAATATGAATGAAATTTATTCTTA	AAAG	AATGTTAGAAAAAGGA				[269]
Arytaina_sp.14	AAA-TAAAATGGGTTACAGTATTTAATATGAATGAAATTTATTCTTA	TTA	AAAG	AATGTTAGAAAAAGGA			[268]
Arytainilla_cognata	GAA-AAAAGTGGGTTACAAATATTTAATATGAATGAAATTTATTGTTA	GATA	AATAAGGAAAAATAGGA				[268]
Arytainilla_cytisi	GAA-AATAATGGGTTACATTAAATTTAATATGAATGAAATTTATTATT	GAAT	AATAACGAAAAAGGA				[267]
Arytainilla_delarbrei	GTA-GAAAATGGGTTACAAATATTTAATATGAATGAAATTTATTGTTA	GAA	AATAGTGAAAAAGGA				[267]
Arytainilla_diluta	GAA-AAAAGTGGGTTACAAATATTTAATATGAATGAAATTTATTATTA	GAGG	TATAATAGAAAAGGA				[268]
Arytainilla_dividens_C	GAA-AAAAGTGGGTTACAAATATTTAATATGAATGAAATTTATTGTTA	GATA	AATAATAGAAAATAGGA				[268]
Arytainilla_dividens_G	GAA-AAAAGTGGGTTACAAATATTTAATATGAATGAAATTTATTGTTA	GGT	AATAATAGAAAATAGGA				[267]
Arytainilla_equitans	GAA-AAAAGTGGGTTACAAATATTTATTATGAATGAAATTTATTGTTA	GATA	AATGATAAAAATAGGA				[268]
Arytainilla_gredi	GAA-AAAAATGGGTTACATTATTTATTATGAATGAAATTTATTACTA	AATT	AATAATGAAAAATAGGA				[268]
Arytainilla_hakani	GAA-AAAAGTGGGTTACAAATATTTAATATGAATGAAATTTATTGTTA	GATA	AATAATAGAAAATAGGA				[268]
Arytainilla_ima	GAA-AAAATGGGTTACATTATTTAGTATGAATGAAATTTATTGTTA	ATTT	ATTAATAGAAAATAGGA				[268]
Arytainilla_incuba	GAA-AAAAGTGGGTTACAAATATTTAATATGAATGAAATTTATTGTTA	GATA	AATAATAGAAAATAGGA				[268]
Arytainilla_modica_Teline_P	GAA-AAAAGTGGGTTACAAATATTTAATATGAATGAAATTTATTGTTA	GATA	AATAATAGAAAATAGGA				[268]
Arytainilla_modica_Cham._P	GAA-AAAAGTGGGTTACAAATATTTAATATGAATGAAATTTATTGTTA	GATA	AATAATAGAAAATAGGA				[268]
Arytainilla_nigralineata	GAA-AAAAGTGGGTTACAAATATTTAATATGAATGAAATTTATTGTTA	GATA	AATAATAGAAAATAGGA				[268]
Arytainilla_pileolata	GAA-AAAAGTGGGTTACAAATATTTAGTATGAATGAAATTTATTGTTA	GATA	AATAATAGAAAATAGGA				[268]
Arytainilla_proboscidea	GAA-AAAAGTGGGTTACAAATATTTAGTATGAATGAAATTTATTGTTA	GATA	AATAATAGAAAATAGGA				[268]
Arytainilla_prognata	GAA-AAAAGTGGGTTACAAATATTTAATATGAATGAAATTTATTGTTA	GATT	TATAATAGAAAAGGA				[268]
Arytainilla_spartiophila_PO	GAA-AAAATGGGTTACATTAGTTACTATGAATGAAATTTATTATT	GGAA	AATATTGAAAAAGGA				[267]
Arytainilla_spartiophila_SP	GAA-AAAATGGGTTACATTAGTTACTATGAATGAAATTTATTATT	GGAA	AATATTGAAAAAGGA				[267]
Arytainilla_ulci	GAA-AA-AATGGGTTACAAATATTTAATATGAATGAAATTTATTGTTA	TAAA	ATTTATTGAAAAGGA				[267]
Arytainilla_umbonata	GAA-AAAAGTGGGTTACAAATATTTAATATGAATGAAATTTATTGTTA	GATA	AATAATAGAAAATAGGA				[268]
Arytainilla_sp.1	GTA-AGAAATGGGTTACATTAGTTAAGATGTATGGAAGTTATTATTA	GAA	AATAATAGAAAATAGGA				[268]
Arytainilla_sp.2	GAA-AAAATGGGTTACAAATATTTAATATGAATGAAATTTATTGTTA	GATA	AATAATAGAAAATAGGA				[267]
Arytainilla_sp.3	GAA-AATAATGGGTTACATTGATTATTTAATATGAATGAAATTTATTATT	GAAT	AATAATAGAAAATAGGA				[267]
Arytainilla_sp.4	GAA-AAGAATGGGTTACAAATATTTAATATGAATGAAATTTACTAGA	AGAT	AGTTATGAAAATAGGA				[267]
Arytainilla_sp.5	GAA-AA-AGTGGGTTACTATATTTAATATGAATGAAATTTATTGTTA	GAAA	AATAATAGAAAATAGGA				[267]
Arytainilla_sp.6	GAA-AAAAGTGGGTTACAAATATTTAGATGTATGGAAGTTATTGTTA	GACA	AATTTAATAAATAGGA				[268]
Arytainilla_sp.7	GAA-AAAAGTGGGTTACAAATATTTAATATGAATGAAATTTATTGTTA	GATA	AATAATAGAAAATAGGA				[268]
Arytainilla_sp.8	GAA-AAGGGTGGGTTACAAATATTTAGTATGAATGAAATTTATTGTTA	GATA	AATAATAGAAAATAGGA				[268]
Arytainilla_sp.9	GAA-AAAAGTGGGTTACACTGTTAATATGAATGAAATTTATTGTTA	GATA	AATAATAGAAAATAGGA				[268]
Arytainilla_sp.10	GAA-AAAAGTGGGTTACAAATATTTAATATGAATGAAATTTATTGTTA	GATA	AATAATAGAAAATAGGA				[268]
Arytainilla_sp.11	GAA-AAAAGTGGGTTACAAATATTTATTATGAATGAAATTTATTGTTA	GATA	AATAATAGAAAATAGGA				[268]
Arytainilla_sp.12	GAA-AAAAGTGGGTTACATTATTTAATATGAATGAAATTTATTGTTA	GATA	AATAATAGAAAATAGGA				[268]
Arytainilla_sp.13	GAA-AAAAGTGGGTTACAGTATTTAATATGAATGAAATTTATTGTTA	GATA	AATAATAGAAAATAGGA				[268]
Cacopsylla_alaterni	GAC-TAAAATGGGTTACAGTAAATTTATGAATGAAATTTACGCTATTA	GTGT	AGAGTATGAAAAGGA				[269]
Cacopsylla_mali	GAC-TAAAATGGGTTACATTATTTATTATGAATGAAATTTAATTAATTTTAAATATGAAATAGGA						[272]
Cyamophila_prohaskai	GTT-CAAAATGGGTTACTTTTATTTAATATGAATGAAATTTATTATT	GTT	AAATATGAAAATAGGA				[267]
Livilla_adusta	GAA-TAAGGTGGGTTACATTTTATAATGAATGAAATTTATTGTTA	AAGG	TAATAATAGAAAATAGGA				[270]
Livilla_blandula	GAT-TAAAGTGGGTTACATTTTATAATGAATGAAATTTATTGTTA	GAGG	AATAGTGGAAAATAGGA				[268]
Livilla_horvathi	GGT-TAAAGTGGGTTACATTTTATAATGAATGAAATTTATTGTTA	AAAT	AATAGTATAAATAGGA				[269]
Livilla_maculipennis	GAT-TAAAGTGGGTTACATTTTATAATGAATGAAATTTATTGTTA	AAAT	AATAATGAAAATAGGA				[268]
Livilla_maura	GAT-TAAAGTGGGTTACATTTTATGAATGAAATTTATTGTTA	GAGC	AGTAGTAGAAAATAGGA				[268]
Livilla_monospermae	GAA-AAAAGTGGGTTACATTTTATTATGAATGAAATTTATTGTTA	GAT	AATTAAGGAAAATAGGA				[268]
Livilla_nervosa	G-A-AAAATGGGTTACACTATTTTATAATGAAATTTACTCTATA	GTTT	GGTTATTAATAATAGGA				[270]
Livilla_pseudoretamae	GAT-TAAAGTGGGTTACATTTTATAATGAATGAAATTTATTGTTA	GAGC	AATAGTAGAAAATAGGA				[268]
Livilla_pyrenaea	GAT-TAAAGTGGGTTACATTTTATGAATGAAATTTATTACTA	AAAT	AATAATAGAAAATAGGA				[268]
Livilla_radiata	GAT-CAGAGTGGGTTACATTTTATAATGGATGAAATTTATTATTA	AAAT	AGTAATAGAAAATAGGA				[268]
Livilla_retamae	GAA-AAAAGTGGGTTACATTTAATATGAATGAAATTTATTGTTA	GAG	AATTAAGGAAAATAGGA				[268]
Livilla_spectabilis	GAT-TAAAGTGGGTTACATTTTATAATGGATGAAATTTATTAGTA	AAGT	AATAATGAAAACAGGA				[268]
Livilla_syriaca	GAT-TGAGGTGGATTACATTTTATAATGAATGAAATTTATTGTTT	AACT	AATAATAGAAAATAGGA				[268]
Livilla_variegata	GAT-TAAAGTGGGTTACATTTTATAATGAATGAAATTTATTGTTA	AAGT	AATAATGAAAATAGGA				[268]
Livilla_vicina	GAA-AAAATGGGTTACATTTTATGATGAATGAAATTTATTA	AAAT	AATAATGAAAAGGA				[268]
Livilla_vittipennella	GAT-TAAAGTGGGTTACATTTTATGATGAATGAAATTTATTGTTA	ATAAT	AATAATAGAAAACAGGA				[269]
Livilla_sp.15	GAG-AAAATGGGTTACATTTTATTATGAATGAAATTTATTGTTA	ATTT	ATTAATGAAAATAGGA				[268]
Livilla_sp.16	GAA-AAAGATGGGTTACATTTATTATGAATGAAATTTATTATTA	ATTT	ATTAATGAAAATAGGA				[268]
Livilla_sp.17	GAA-AAAATGGGTTACATTTATTATGAATGAAATTTACTAT	A	AAAT	AGTAATAGAAAATAGGA			[268]
Pseudacanthopsylla_improvisa	GAA-AAAATGGGTTACTATAGTTACAAATGAATGAAATTTATAAATGGAAT						[270]

APPENDIX 2 cont.

	290	300	310	320	330	340]	
		*****				12S rRNA end]	
Acizzia_hollisi	TTTAATAGTA	---AAATAA	---TTTTAAAGAAATAAAATGAATAT	AGATTCTAAAATATG			[323]
Acizzia_uncatoides	TTTGATAGTAACTAATTT	-----AGAGAATTAATGAAAAG	AT????????????				[320]
Arytaina_adenocarp_i_PO	TTTAGCAGTA	---AGTGAGA	ATTAATAAAGACTTTCTGTGAATTT	AGATTCTAAAATATG			[326]
Arytaina_adenocarp_i_SP	TTTAGCAGTA	---AGTGAGA	ATTAATAAAGACTTTCTGTGAATTT	AGATTCTAAAATATG			[326]
Arytaina_adenocarp_i_MO	TTTAGTAGTA	---AGTGAGA	ATTAATAAAGACTTTCTGTGAATTT	AGATWCTAAAATATG			[326]
Arytaina_devia_ssp_insularis_C	TTTGAAGTAACCCAGGAA	---TTATTAAGATTTTTATGAATAT	AGATWCTGAAAATATG				[326]
Arytaina_devia_ssp_insularis_P	TTTGAAGTAACCCAGGAT	---TATTAAGTTTTCTATGAATTT	AGATTCTAAAATATG				[326]
Arytaina_genistae_SC	TTTGAAGTAACCAAGAG	---TTAATAAAGATTTCTATGAATTT	AGATTCTAAAATATG				[326]
Arytaina_genistae_PO	TTTGAAGTAACCAAGAG	---TTAATAAAGATTTCTATGAATTT	AGATTCTAAAATATG				[326]
Arytaina_nubivaga	TTTGAAGTAACCCAGAAA	---TAGTAAAGATTTTTATGAATTT	AGATTCTAAAATATG				[326]
Arytaina_sp.14	TTTGAAGTAACCCAGGAAAT	---AGTAAAGATTTTTATGAATTT	AGATWCTAATTT				[322]
Arytainilla_cognata	TTTGAAGTA	---AAAAAA	---TTATTAAGATCTTTATGAATTT	AGATTCTAAAATATG			[323]
Arytainilla_cytisi	TTTAAAAGTA	---AAGGGAA	GTTATTAATAAATTTTTATGAATTT	AGATTCTAAAATATG			[324]
Arytainilla_delarbrei	TTTAAAAGTA	---AGGAGAA	ATTTGTAAGATTTTTATGAATAA	AGATTCTAAAATATG			[324]
Arytainilla_diluta	TTTAAAAGTA	---AAAGAA	---TTATTAAGGATTTTTATGAATTT	AGATTCTAAAATATG			[323]
Arytainilla_dividens_C	TTTGAAGTA	---AAAAAA	---TTATTAAGATTTTTATGAATTT	AGATT????????			[323]
Arytainilla_dividens_G	TTTGAAGTA	---AACAAAA	---TTATTAAGATTTTTATGAATTT	AGATTCTAAAATATG			[323]
Arytainilla_equitans	TTTGAAGTA	---AAAAAA	---CTATTAAGATTTTTATGAATTT	AGATTCT????????			[323]
Arytainilla_gredi	TTTAATAGTA	---AAGGGAA	---TTAA	---AAGTGTTTTGTGAATTA	AGATTCTAAAATATG		[322]
Arytainilla_hakani	TTTGAAGTA	---AAAAAA	---TTACTAAAGATTTTTATGAATTT	AGATACTAAA-TAT?			[322]
Arytainilla_ima	TTTAATAGTA	---AATAATA	---TTAAAGATTTTTATGAATAA	AGATTCTGAAAATATG			[322]
Arytainilla_incuba	TTTGAAGTA	---AAAAAA	---TTACTAAAGATTTTTATGAATTT	AGATACTAAA-TAT?			[323]
Arytainilla_modica_Teline_P	TTTGAAGTA	---AAAAAA	---TTATTAAGATTTTTATGAATTT	AGATTCTAAAATATG			[323]
Arytainilla_modica_Cham._P	TTTGAAGTA	---AAAAAA	---TTATTAAGATTTTTATGAATTT	AGATTCTAAAATATG			[323]
Arytainilla_nigralineata	TTTAAAAGTA	---AAAGAA	---ATATTAAGATTTTTATGAATTA	AGATACTAAAATA??			[323]
Arytainilla_pileolata	TTTGAAGTA	---AAAAAA	---TTATTAAGATTTTTATGAATTT	AGATTCTAAAATATG			[322]
Arytainilla_proboscidea	TTTGAAGTA	---AAAAAA	---TATTAAGATTTTTATGAATTT	AGATACTAAA-TA??			[321]
Arytainilla_prognata	TTTAAAAGTA	---AAAAAA	---TTATTAAGATTTTTATGAATTT	AGATTCTAAAATATG			[323]
Arytainilla_spartiophila_PO	TTTAAAAGTA	---AATAATA	ATTAATAAAGATTTTTATGAATTT	AGATTCTAGAATATG			[324]
Arytainilla_spartiophila_SP	TTTAAAAGTA	---AATAATA	AT????????????????????				[325]
Arytainilla_ulci	TTTAAAAGTA	---AAGAAAA	ATTAATAAAGATTTTTATGAATTT	AGATTCTAAAATATG			[324]
Arytainilla_umbonata	TTTGAAGTA	---AAAAAA	---TTATTAAGATTTTTATGAATTT	AGATTCTAAAATATG			[323]
Arytainilla_sp.1	TTTAAAAGTA	---AAAGAA	---TTAGTAAAGATTTTTATGAATTT	AGATTCTAAAATATG			[322]
Arytainilla_sp.2	TTTAAAAGTA	---AATAAG	---TAAATAAAGATTTTTATGAATTT	AGATATAATAGATTT			[324]
Arytainilla_sp.3	TTTAAAAGTA	---AAGGAAA	GTTATTAATAA-ATTTTTATGAATTT	AGATACTGAAAATA??			[323]
Arytainilla_sp.4	TTTAATAGTA	---AATAAAATTTT	ATAGAGATTTTTATGAATTT	AGATWCTAAAATAT?			[325]
Arytainilla_sp.5	TTTAAAAGTA	---AAAAAA	---AATTAAGATTTTTATGAATTT	AGATTCTAAAATATG			[321]
Arytainilla_sp.6	TTTGAAGTA	---AAAAAA	---TTATTAAGATTTTTATGAATTT	AGATTCTAAAATAT?			[323]
Arytainilla_sp.7	TTTGAAGTA	---AAAAAA	---TTATTAAGATTTTTATGAATTT	AGATTCTAAAATATG			[323]
Arytainilla_sp.8	TTTGAAGTA	---AAAAAA	---TATTAAGATTTTT-ATGAATTT	AGATTCTAAAAGTATG			[321]
Arytainilla_sp.9	TTTGAAGTA	---AAAAAA	---TTATTAAGATTTTTATGAATTT	AGATTCTAAAATATG			[323]
Arytainilla_sp.10	TTTGAAGTA	---AAAAAA	---TTATTAAGATTTTTATGAATTT	AGATTCTAAAATATG			[323]
Arytainilla_sp.11	TTTGAAGTA	---AAAAAA	---TTATTAAGATTTTTATGAATTT	AGATWCTAAAATATG			[323]
Arytainilla_sp.12	TTTGAAGTA	---AAAAAA	---TTATTAAGATTTTTATGAATTT	AGATTCTAAAATATG			[323]
Arytainilla_sp.13	TTTGAAGTA	---AAAAAA	---TTATTAAGATTTTTATGAATTT	AGATTCTAAAATATG			[323]
Cacopsylla_alaterni	TTTATAAGTA	---AAAAAA	---TTGTAAGAATTTGTATGAATAT	AGATTCTAAAATATG			[324]
Cacopsylla_mali	TTTATAAGTA	---AAAAAG	---TTATTAAGATTTTTATGAATAT	AGATTCTAAAATATG			[327]
Cyamophila_prohaskai	TTTGTAAAGTA	---AAAAGA	---TTATTAAGATTTTTATGAATAA	AGATTCTAAAATATG			[322]
Livilla_adusta	TTTAAAGTA	---AGGGAGA	---TTATTAAGACTTTATGAATAA	AGATTCTAAAATATG			[326]
Livilla_blandula	TTTAAAAGTA	---AAAAAGA	ATTAATAAAGATTTCTATGAATAA	AGATTCTAAAATATG			[325]
Livilla_horvathi	TTTAAAAGTA	---AAGAAAA	---TGATTAAGATTTTACATGAATAT	AGATTCTAAAAGTATG			[325]
Livilla_maculipennis	TTTAAAGTA	---AAGAAAG	---TTATTAAGATTTTATA????????				[325]
Livilla_maura	TTTAAAAGTA	---AAAAAA	---CTATTAAGATTTTTATGAATAA	AGATTCTAAAAGTATG			[324]
Livilla_monospermae	TTTAAAAGTA	---AAACAGA	ATAAATAAAGATTTTTATGAATAA	AGATTCTGAAATATG			[325]
Livilla_nervosa	WTTAAAAGTG	---TAAAAAA	A---ATTAAGATTTTTATGAATAA	AGATWCTAAAATATG			[325]
Livilla_pseudoretamae	TTTAAAAGTA	---AAAAAGA	ATTAATAAAGATTTCTATGAATAA	AGATTCTAAAATATG			[325]
Livilla_pyrenaea	TTTAAAAGTA	---AAGGAA	---TTATTAAGATTT????????				[325]
Livilla_radiata	TTTAAAAGTA	---AAGTGAA	---CTTATTAAGATTTTTATGAATTT	AGATTCTAAAAGTATG			[325]
Livilla_retamae	TTTAAAAGTA	---AAATAGA	ATAAATAAAGATTTGTATGAATTA	AGATTCTGAAATATG			[325]
Livilla_spectabilis	TTTGAAGTA	---AAGGAG	---TTATTAAGATTTACATGAATAT	AGATTCTAAAAGTATG			[324]
Livilla_syriaca	TTTAATAGTA	---AAAGAA	---TTATTAAGATTTTTATGAATTT	AGATTCTAAAATATG			[327]
Livilla_variegata	TTTGAAGTA	---AGGGAG	---CTATTAAGATTTTTATGAATAA	AGATTCTAAAAGTATG			[324]
Livilla_vicina	TTTAATAGTA	---AAAGAAA	GTTAATAAGAAATTTTTATGAATTT	AGATTCTAAAATATG			[325]
Livilla_vittipennella	TTTAAAAGTA	---AAAAGAA	---TTATTAAGATTTTTATGAATAT	AGATTCTAAAAGTATG			[325]
Livilla_sp.15	TTTGATAGTA	---AATGTAA	---TTTAAAGATTTTTATGAATAA	AGATTCTAAAATATG			[322]
Livilla_sp.16	TTTAAACAGTA	---AATAATA	---TTAAAGATTTTTATGAATAA	AGATTCTAAAATATG			[322]
Livilla_sp.17	TTTAATAGTA	---AGTAAA	---CTAAAGATTTTTATGAATAG	AGATWCTAAAATATG			[320]
Pseudacanthopsylla_improvisa	TTTAAACAGTA	---AATAAA	---TAAATAAAGATTTTTATGAATAA	AGATTCTAAAATATG			[325]

APPENDIX 3. Aligned COI-tRNA-COII matrix (639bp), ambiguous regions in the tRNA leucine are indicated by *.

[10	20	30	40	50	60	70]
[.]
							[COI 262bp start
Acizzia_hollisi	TCCTCAACATTTCTAGGATTAATAGGAATACCTCGACGATACTCTAACTATCCAGATTTATTAATTTCA						[70]
Acizzia_uncatoides	TCCTCAACACTTTTAGGATTAATAGGGATACCTCGACGATACTCAAACCTACCCTGATCTTTAATCTCT						[70]
Arytaina_adenocarpi_PO	TCCTCAACACTTCTTAGGACTTATAGGAATACCACGACGCTACTCTAATTACCAGATTTACTTATCTTC						[70]
Arytaina_adenocarpi_SP	?????????CTTCTTAGGACTTATAGGAATACCACGACGCTACTCTAATTACCAGATTTACTTATCTTC						[70]
Arytaina_adenocarpi_MO	TCCTCAACACTTCTTAGGACTTATAGGAATACCACGACGCTACTCTAATTACCAGATTTACTTATCTTC						[70]
Arytaina_devia_T	?????????????TTGGACTTATAGGAATACCTCGACGTTACTCAAACCTACCAGACCTCTTATTTT						[70]
Arytaina_devia_G	?????????????TTGGACTTATAGGAATACCTCGACGTTACTCAAACCTACCAGWCCCTTATTTT						[70]
Arytaina_devia_ssp_insularis_C	?????????????CTCTTTGGACTCATAGGAATACCTCGACGTTACTCAAACCTACCAGATTTACTTATTTT						[70]
Arytaina_devia_ssp_insularis_P	?????????????CTCTTTGGTCTTATAGGTATACCTCGTCTACTCAAATACCAGTCTCTTATTTT						[70]
Arytaina_genistae_SC	?????????????CTTGGTCTTATAGGAATGCCACGGCGTTACTCAAATACCAGGTTTACTCATTTT						[70]
Arytaina_genistae_PO	?????????????CTTGGTCTTATAGGAATGCCACGGCGTTACTCAAATACCAGGTTTACTCATTTT						[70]
Arytaina_genistae_MO	?????????????CTTGGTCTTATAGGAATGCCACGGCGTTACTCAAATACCAGGTTTACTCATTTT						[70]
Arytaina_nubivaga	TCCTCAACACTTCTTGGCCTTATAGGAATGCCACGCTACTCAAACCTACCAGATTTCTTATTTT						[70]
Arytaina_sp.14	TCCTCAACACTTCTTGGCCTTATAGGAATGCCACGCTACTCAAACCTACCAGATTTCTTATTTT						[70]
Arytainilla_cognata	?????????CTTCTTAGGCTCATAGGTATGCCACGCCGATATCTAACTACCCTGACCTCTAATTTCT						[70]
Arytainilla_diluta_C	TCCTCAACATTTCTTGGACTTATAGGAATACCACGACGATATCTAATTACCAGATTTACTTATCTTC						[70]
Arytainilla_diluta_T	?????????CTTCTTGGCTTATAGGAATACCACGACGATATCTAATTACCAGATTTACTTATCTTC						[70]
Arytainilla_diluta_C	?????????TTTCTTAGGCTTATAGGAATACCACGCCGATACTCTAATTACCAGATTTACTTATCTTC						[70]
Arytainilla_diluta_T	?????????TTTCTTAGGCTTATAGGAATACCACGCCGATACTCTAATTACCAGATTTACTTATCTTC						[70]
Arytainilla_dividens_C	?????????CTTCTTAGGCTTATAGGTATGCCCGCCGCTACTCTAATTACCAGATTTACTTATCTTC						[70]
Arytainilla_dividens_T	?????????CTTCTTAGGCTTATAGGTATGCCCGCCGCTACTCTAATTACCAGATTTACTTATCTTC						[70]
Arytainilla_dividens_G	?????????CTTCTTAGGCTTATAGGTATGCCCGCCGCTACTCTAATTACCAGATTTACTTATCTTC						[70]
Arytainilla_equitans	?????????CTTCTTAGGCTTATAGGTATGCCCGCCGCTACTCTAATTACCAGATTTACTTATCTTC						[70]
Arytainilla_hakani	?????????AGGGCTTATAGGTATACCACGTCGATACTCTAATTACCAGATTTACTTATCTTC						[70]
Arytainilla_ima	?????????TAGGACTTATAGGAATGCCACGCTACTCAAACCTACCAGATTTACTTATCTTC						[70]
Arytainilla_incuba	?????????CTTAGGCTTATAGGTATACCACGTCGATACTCTAATTACCAGATTTACTTATCTTC						[70]
Arytainilla_modica_Teline_P	TCCTCAACACTTCTTGGCCTTATAGGAATGCCACGCTACTCAAACCTACCAGATTTCTTATTTT						[70]
Arytainilla_modica_Teline_P	?????????CTTCTTAGGCTCATAGGCATGCCCGCCGCTATTCTAATTACCAGATTTCTTATTTT						[70]
Arytainilla_modica_Teline_H	TCCTCAACACTTCTTAGGCTTATAGGTATGCCCGCCGATATCTAATTACCAGATTTCTTATTTT						[70]
Arytainilla_modica_Teline_H	?????????CTTCTTAGGCTCATAGGCATGCCCGCCGCTATTCTAATTACCAGATTTCTTATTTT						[70]
Arytainilla_modica_Teline_H	?????????CTTCTTAGGCTCATAGGCATGCCCGCCGCTATTCTAATTACCAGATTTCTTATTTT						[70]
Arytainilla_nigralineata_C	TCCTCAACACTTCTTAGGCTTATAGGTATGCCCGCCGATATCTAATTACCAGATTTCTTATTTT						[70]
Arytainilla_nigralineata_T	TCCTCAACACTTCTTAGGCTTATAGGTATGCCCGCCGATATCTAATTACCAGATTTCTTATTTT						[70]
Arytainilla_nigralineata_G	?????????CTTCTTAGGCTTATAGGTATGCCCGCCGATATCTAATTACCAGATTTCTTATTTT						[70]
Arytainilla_nigralineata_G	?????????TCTCTTAGGCTTATAGGTATGCCCGCCGATATCTAATTACCAGATTTCTTATTTT						[70]
Arytainilla_pileolata_T.can	?????????CTCTGTAGGCTTATAGGAATACCCTCGCCGATATCTAATTACCAGATTTCTTATTTT						[70]
Arytainilla_pileolata_T.osy	?????????CTCTGTAGGCTTATAGGAATACCCTCGCCGATATCTAATTACCAGATTTCTTATTTT						[70]
Arytainilla_proboscidea_A.vis_T	?????????TCTCTTAGGCTTATAGGAATACCCTCGCCGATATCTAATTACCAGATTTCTTATTTT						[70]
Arytainilla_proboscidea_A.fol_P	?????????TCTCTTAGGCTTATAGGAATACCCTCGCCGATATCTAATTACCAGATTTCTTATTTT						[70]
Arytainilla_prognata	?????????TCTAGGCTTATAGGAATACCCTCGCCGATATCTAATTACCAGATTTCTTATTTT						[70]
Arytainilla_spartiophila_PO	TCCTCAACATTTCTTGGTCTAATAGGAATACCCTCGACGATACTCTAATTACCAGATTTCTTATTTT						[70]
Arytainilla_spartiophila_SP	TCCTCAACATTTCTTGGTCTAATAGGAATACCCTCGACGATACTCTAATTACCAGATTTCTTATTTT						[70]
Arytainilla_spartiophila_MO	?????????CTTCTTAGGCTTATAGGAATACCCTCGACGATACTCTAATTACCAGATTTCTTATTTT						[70]
Arytainilla_sulci	?????????TCTTGGCTTATAGGAATACCCTCGACGTTATTCCAATTACCCTGATCTTCTAATTTT						[70]
Arytainilla_umbonata	?????????CTTGTAGGCTTATAGGTATACCACGTCGATACTCTAATTACCAGATTTCTTATTTT						[70]
Arytainilla_sp.1	TCCTCAACATTTCTTGGTCTAATAGGAATACCCTCGACGATACTCTAATTACCAGATTTCTTATTTT						[70]
Arytainilla_sp.2	?????????CTTGTAGGCTTATAGGTATACCACGTCGATACTCTAATTACCAGATTTCTTATTTT						[70]
Arytainilla_sp.3	?????????CTTGTAGGCTTATAGGTATACCACGTCGATACTCTAATTACCAGATTTCTTATTTT						[70]
Arytainilla_sp.4_SP	TCCTCAACATTTCTTGGTCTAATAGGAATACCCTCGACGATACTCTAATTACCAGATTTCTTATTTT						[70]
Arytainilla_sp.4_MO	TCCTCAACATTTCTTGGTCTAATAGGAATACCCTCGACGATACTCTAATTACCAGATTTCTTATTTT						[70]
Arytainilla_sp.5	?????????CTTCTTAGGCTTATAGGAATACCCTCGCCGATACTCTAATTACCAGATTTCTTATTTT						[70]
Arytainilla_sp.6	?????????CTTCTTAGGCTTATAGGAATACCCTCGCCGATACTCTAATTACCAGATTTCTTATTTT						[70]
Arytainilla_sp.7	?????????CTTCTTAGGCTTATAGGAATACCCTCGCCGATACTCTAATTACCAGATTTCTTATTTT						[70]
Arytainilla_sp.8	?????????CTCGCTCTTGGGCTTATAGGCATACCCTCGTCTATTCTAATTACCAGATTTCTTATTTT						[70]
Arytainilla_sp.9	?????????CTTCTTAGGCTTATAGGAATACCCTCGTCTATTCTAATTACCAGATTTCTTATTTT						[70]
Arytainilla_sp.10_P	?????????CTTCTTAGGCTTATAGGAATACCCTCGTCTATTCTAATTACCAGATTTCTTATTTT						[70]
Arytainilla_sp.10_H	TCCTCAACACTTCTTGGTCTAATAGGAATACCCTCGACGATACTCTAATTACCAGATTTCTTATTTT						[70]
Arytainilla_sp.11	?????????CTTCTTAGGCTTATAGGAATACCCTCGACGATACTCTAATTACCAGATTTCTTATTTT						[70]
Arytainilla_sp.12	?????????CTTCTTAGGCTTATAGGAATACCCTCGACGATACTCTAATTACCAGATTTCTTATTTT						[70]
Arytainilla_sp.13	?????????CTTCTTAGGCTTATAGGAATACCCTCGACGATACTCTAATTACCAGATTTCTTATTTT						[70]
Cacopsylla_alaterni	?????????CTTCTTAGGCTTATAGGTATACCCTCGACGTTACTCAAATACCCTGATCTTATTAATCTCT						[70]
Cacopsylla_mali	TCCTCAACATTTCTTAGGCTTATAGGAATACCCTCGACGATACTCTAATTACCAGATTTCTTATTTT						[70]
Cyamophila_prohaskai	TCCTCAACACTTCTTGGTCTAATAGGAATACCCTCGACGATACTCTAATTACCAGATTTCTTATTTT						[70]
Livilla_adusta	TCCTCAACATTTCTTAGGCTTATAGGAATACCCTCGACGATACTCTAATTACCAGATTTCTTATTTT						[70]
Livilla_blandula	TCCTCAACATTTCTTAGGCTTATAGGAATACCCTCGACGATACTCTAATTACCAGATTTCTTATTTT						[70]
Livilla_maura	TCCTCAACATTTCTTAGGCTTATAGGAATACCCTCGACGATACTCTAATTACCAGATTTCTTATTTT						[70]
Livilla_monospermae_T	TCCTCAACATTTCTTAGGCTTATAGGAATACCCTCGACGATACTCTAATTACCAGATTTCTTATTTT						[70]
Livilla_monospermae_G	TCCTCAACATTTCTTAGGCTTATAGGAATACCCTCGACGATACTCTAATTACCAGATTTCTTATTTT						[70]
Livilla_monospermae_P	TCCTCAACATTTCTTAGGCTTATAGGAATACCCTCGACGATACTCTAATTACCAGATTTCTTATTTT						[70]
Livilla_retamae	?????????TCTTAGGCTTATAGGATGCCCTCGACGCTACTCAAATACCAGATTTCTTATTTT						[70]
Livilla_variegata	?????????TCTTAGGCTTATAGGATGCCCTCGACGCTACTCAAATACCAGATTTCTTATTTT						[70]
Livilla_sp.15	TCCTCAACATTTCTTAGGCTTATAGGTATGCCCTCGACGATACTCAAACCTACCAGATTTCTTATTTT						[70]
Livilla_sp.16	TCCTCAACATTTCTTAGGCTTATAGGTATGCCCTCGACGATACTCAAACCTACCAGATTTCTTATTTT						[70]
Livilla_sp.17	TCCTCAACACTTCTTAGGCTTATAGGTATGCCCTCGACGATACTCAAATACCAGATTTCTTATTTT						[70]
Pseudacanthopsylla_improvisa	?????????GGTCTAACAGGTATNNNNCCGACAATTAATTACCAGATTTACTAATTTTCT						[70]

APPENDIX 3 cont.

	80	90	100	110	120	130	140]
[
[
Acizzia_hollisi	TGAAATGTAGTTTCATCAATGGATCAATAAATTTTCATCATTTTCAATAAATTTTATTATAAATTATGTTT						[140]
Acizzia_uncatoides	TGAAATATTGTATCATCATTAGGGTCAATAAATTTCTCGTTTTCTATGATTTTGTTTATAAATTATTTATTT						[140]
Arytaina_adenocarpi_PO	TGAAATATTATTTCTTCAATGGATCAATGATTTCAATAAATTTTTCAGTTCTAATAATTTGTAATATTGCT						[140]
Arytaina_adenocarpi_SP	TGAAATATTATTTCTTCAATGGATCAATGATTTCAATAAATTTTTCAGTTCTAATAATTTGTAATATTGCT						[140]
Arytaina_adenocarpi_MO	TGAAATATTATTTCTTCAATGGATCAATGATTTCAATAAATTTTTCAGTTCTAATAATTTGTAATATTGCT						[140]
Arytaina_devia_T	TGAAATATTATTTCTTCAATGGATCAATAAATTTCTTTATTTTTCAGTTCTTTTATTGTAATATTATTT						[140]
Arytaina_devia_G	TGAAATATTATTTCTTCAATGGATCAATAAATTTCTTTATTTTTCAGTTCTTTTATTGTAATATTATTT						[140]
Arytaina_devia_ssp_insularis_C	TGAAATATTGTTTCTTCTATTGGGCTATAAATTTCTTTATTTTTCAGTACTTCTATTGTAATATTATTT						[140]
Arytaina_devia_ssp_insularis_P	TGAAATATTATTTCTTCTATTGGTCAATAAATTTCTTTATTTCTCAGTCTCCTATTGTAATATTATTT						[140]
Arytaina_genistae_SC	TGAAATATTATTTCTTCTATTGGATCTATAAATTTCTTTATTTTTCAGTTCTTTTATTATAAATTATGTTT						[140]
Arytaina_genistae_MO	TGAAATATTATTTCTTCTATTGGATCTATAAATTTCTTTATTTTTCAGTTCTTTTATTATAAATTATGTTT						[140]
Arytaina_nubivaga	TGAAACATTATTTCTTCCATTGGATCAATGATTTCTTTATTTTTCAGTACTTTTGTTTATAAATTATTT						[140]
Arytaina_sp.14	TGAAACATTATTTCTTCCATTGGATCAATGATTTCTTTATTTTTCAGTACTTTTGTTTATAAATTATTT						[140]
Arytainilla_cognata	TGAAATATCGTCTCATCTCTGGATCAATAAATTTCTCTATTCTCAGTAATTTTATTATTATTATTT						[140]
Arytainilla_cytisi	TGAAATATTATATCTTCTGTTGGGTCAATAAATTTCTCTTTTTTCAGTTATTTTATTATAAATTATTT						[140]
Arytainilla_delarbrei	TGAAATGTAGTATCTTCTATTGGATCAATAAATTTCTTTTTTCAGTTGATTTTGTCTGCTATTATCT						[140]
Arytainilla_diluta_C	TGAAACATTATCTTCTTATTGGATCAATAAATTTCTTTATTTTTCAGTAATCTTATTATTATTATTT						[140]
Arytainilla_diluta_T	TGAAACATTATCTTCTTATTGGATCAATAAATTTCTTTATTTTTCAGTAATCTTATTATTATTATTT						[140]
Arytainilla_dividens_C	TGAAATATTGTTTCTCATCTATTGGATCAATAAATTTCTTTATTTTTCAGTAATCTTATTATTATTATTT						[140]
Arytainilla_dividens_T	TGAAACATTATTTCTCATCTATTGGATCAATAAATTTCTTTATTTTTCAGTAATCTTATTATTATTATTT						[140]
Arytainilla_dividens_G	TGAAACATTATTTCTCATCTATTGGATCAATAAATTTCTTTATTTTTCAGTAATCTTATTATTATTATTT						[140]
Arytainilla_equitans	TGAAATATTATTTCTTCTATTGGATCAATAAATTTCTTTATTTTTCAGTAATCTTATTATTATTATTT						[140]
Arytainilla_hakani	TGAAATATTGTATCATCTATTGGGTCAATAAATTTCTCTATTTTTCAGTAATCTTATTATTATTATTT						[140]
Arytainilla_ima	TGAAATATTATTTCTTCAATGGATCAATAAATTTCTTTATTTTTCAGTAATCTTATTATTATTATTT						[140]
Arytainilla_incuba	TGAAATATTGTATCATCTATTGGATCAATAAATTTCTCTATTTTTCAGTAATCTTATTATTATTATTT						[140]
Arytainilla_modica_Teline_P	TGAAACATTGTGTCATCTATTGGATCAATAAATTTCTCTATTCTCAGTAATCTTATTATTATTATTT						[140]
Arytainilla_modica_Teline_H	TGAAACATTGTGTCATCTATTGGATCAATAAATTTCTGCTATTCTCAGTAATCTTATTATAAATTATTT						[140]
Arytainilla_modica_Cham_H	TGAAACATTGTGTCATCTATTGGATCAATAAATTTCTGCTATTCTCAGTAATCTTATTATAAATTATTT						[140]
Arytainilla_nigralineata_C	TGAAACATTTTATCTTCTATTGGATCAATAAATTTCTTTATTTTTCAGTATTTTATTATTATTATTT						[140]
Arytainilla_nigralineata_T	TGAAACATTTTATCTTCTATTGGATCAATAAATTTCTTTATTTTTCAGTATTTTATTATTATTATTT						[140]
Arytainilla_nigralineata_G	TGAAACATTTTATCTTCTATTGGATCAATAAATTTCTTTATTTTTCAGTATTTTATTATTATTATTT						[140]
Arytainilla_pileolata_T.can	TGAAATATTGTTTCTTCCATTGGGTCAATAAATTTCTTTATTTTTCAGTATCTTATTATTATTATTT						[140]
Arytainilla_pileolata_T.osy	TGAAATATTGTTTCTTCCATTGGGTCAATAAATTTCTTTATTTTTCAGTATCTTATTATTATTATTT						[140]
Arytainilla_proboscidea_A.vis_T	TGAAACATTGTATCTTCTATTGGATCAATAAATTTCTTTATTTCTCGTAATCTTATTATTATTATTT						[140]
Arytainilla_proboscidea_A.fol_P	TGAAACATTGTATCTTCTATTGGATCAATAAATTTCTTTATTTCTCGTAATCTTATTATTATTATTT						[140]
Arytainilla_prognata	TGAAACATTATTTCTTCTATTGGATCAATAAATTTCTTCTATTCTCAGTAATCTTATTATTATTATTT						[140]
Arytainilla_spartiophila_PO	TGAAATATTGTATCTTCTATTGGATCTATAAATTTCTTTTTTCAGTAATTTTATTCTTATTATTATTT						[140]
Arytainilla_spartiophila_SP	TGAAATATTGTATCTTCTATTGGATCTATAAATTTCTTTTTTCAGTAATTTTATTCTTATTATTATTT						[140]
Arytainilla_spartiophila_MO	TGAAATATTGTATCTTCTATTGGATCTATAAATTTCTTTTTTCAGTAATTTTATTCTTATTATTATTT						[140]
Arytainilla_sulci	TGAAACATTATTTCTTCTATTGGATCAATAAATTTCTACATTTTTCAGTATTTTATTATAAATTTATTT						[140]
Arytainilla_umbonata	TGAAATATTGTATCATCTATTGGATCAATAAATTTCTCTATTCTCAGTAATCTTATTATTATTATTT						[140]
Arytainilla_sp.1	TGAAATGTAGTATCTTCTATTGGATCAATAAATTTCTTTTTTCAGTATTTTGTTTATCATTATTATTT						[140]
Arytainilla_sp.2	TGAAATATTATTTCTTCTATTAGGATCAATAAATTTCTTTTTTCAGTATTTTATTATTATTATTT						[140]
Arytainilla_sp.3	TGAAACATTATATCTTCTGCGGATCAATAAATTTCTTTTTTCAGTTATTTTATTATTACTATTATTT						[140]
Arytainilla_sp.4_SP	TGAAATATTATTTCTTCCATTGGTCAATAAATTTCTTTATTTTCTGTAATTTATTATTATTATTT						[140]
Arytainilla_sp.4_MO	TGAAATATTATTTCTTCCATTGGTCAATAAATTTCTTTATTTTCTGTAATTTATTATTATTATTT						[140]
Arytainilla_sp.5	TGAAATATTGTGTCCTTCTATTGGATCAATAAATTTCTATTATTTTCAGTAATTTTATTGTTATTATCT						[140]
Arytainilla_sp.6	TGAAACATCATCTCCTCTATTGGATCAATAATCTCTATTTTTCAGTAATTTGTTTATAAATTATTT						[140]
Arytainilla_sp.7	TGAAATATTATCTCCTCTATTGGATCAATAAATTTCTTATTCTCAGTAATTTATTATTATTATTT						[140]
Arytainilla_sp.8	TGAAATATTGTATCTTCTATTGGATCAATAAATTTCTTTATTTTTCAGTAATCTTATTATTATTATTT						[140]
Arytainilla_sp.9	TGAAACATTGTATCTTCTATTGGATCAATAAATTTCTATTATTTTTCAGTAATCTTATTATTATTATTT						[140]
Arytainilla_sp.10_P	TGAAATATTGTTTCTTCTATTGGATCAATAAATTTCTTTATTTCTCAGTAATTTTATTATTATTATTT						[140]
Arytainilla_sp.10_H	TGAAATATTGTTTCTTCTATTGGATCAATAAATTTCTTTATTTCTCAGTAATTTTATTATTATTATTT						[140]
Arytainilla_sp.11	TGAAATATTGTATCTTCTATTGGATCAATGATTTCTTTATTTCTCAGTATTTTATTATTATTATTT						[140]
Arytainilla_sp.12	TGAAACATTGTGTCATCTATTGGATCAATAAATTTCTTTATTTCTCAGTAATCTTATTATTATTATTT						[140]
Arytainilla_sp.13	TGAAACATCATTTCTCTTGGTCAATAAATTTCTCTATTCTCAGTAATTTTATTATTATTATTT						[140]
Cacopsylla_alaterni	TGAAATATTATTTCTTCAATGGATCCATAAATTTCTTTATTTCTCAGTATTTTATTATAAATTATCT						[140]
Cacopsylla_mali	TGAAACATCATCTCATCTATTGGTCAATAAATTTCACTATTTTTCAGTAATCTTATTATAAATTATCT						[140]
Cyamophila_prohaskai	TGAAATATTATCTTCTTCTGGATCAATAAATTTCTTTATTTTCAATAAATCTTATTATAAATTATCT						[140]
Livilla_adusta	TGAAATATTATTTCTTCTATTGGATCAATAAATTTCTTATTTTTCAGTAATTTTATTATAAATTATTT						[140]
Livilla_blandula	TGAAATATTGTGTCATCTATTGGGTCAATAAATCTTCTTTATTTTTCAGTAATTTTATTGTAATTTATTT						[140]
Livilla_maura	TGAAATATCATATCATCTATTGGATCAATAAATCTTCTTTATTTTTCAGTAATTTTATTGTAATTTATTT						[140]
Livilla_monospermae_T	TGAAATATCATTTCTTCTATTGGATCAATAAATTTCTTATTTTTCAGTTATTTTATTATTATTATTT						[140]
Livilla_monospermae_G	TGAAATATTGTTTCTTCTATTGGATCAATAAATTTCTTATTTTTCAGTTATCTTATTATTATTATTT						[140]
Livilla_monospermae_P	TGAAATATCATTTCTTCTATTGGATCAATAAATTTCTTATTTTTCAGTTATTTTATTATTATTATTT						[140]
Livilla_retamae	TGAAACATTATTTCTTCTATTGGATCTATAAATTTCTCTTTTTTCAGTTATTTTATTATTATTATTT						[140]
Livilla_variegata	TGAAATATTATTTCTTCTATTGGATCAATAAATTTCTTTATTTTTCAGTATTTTATTGTCGTAATTTATTT						[140]
Livilla_sp.15	TGAAATATTGTTTCTTCTATTGGATCAATAAATTTCTATTATTTTCAATAAATTTTCAATAAATTTATTT						[140]
Livilla_sp.16	TGAAATATTATTTCTTCAATGGATCAATAAATTTCTTTATTTTTCAGTAATTTTAAATTTTATTATTT						[140]
Livilla_sp.17	TGAAATATTATTTCTTCAATGGATCAATAAATTTCTTATTTTTCAGTTATTTTGTTTATTACCATTATTT						[140]
Pseudacanthopsylla_improvisa	TGAAATATCATTTCTCATCTATTGGATCAATAAATTTCTTTTTTTCAGTAATTTTCTTATTATTATTT						[140]

APPENDIX 3 cont.

	150	160	170	180	190	200	210]
[]
[]
Acizzia_hollisi	GAGAAGCTTTAACTTCTAAACGCTGTAATATTATTTATAATTCTAATATTCACATAATTGAATGAATACAAAA						[210]
Acizzia_uncatoides	GAGAAGCTTTAACTTCTAAACGCTGTAATATTATTTATAATTCTAATATTCACATAATTGAATGAATACAAAA						[210]
Arytaina_adenocarpi_PO	GAGAATCTCTACTTTCTAAGCGTTTAAATAATTTTTAATACAACCTTTAATATAGTTGAGTGAATTCAAAA						[210]
Arytaina_adenocarpi_SP	GAGAATCTCTACTTTCTAAGCGTTTAAATAATTTTTAATACAACCTTTAATATAGTTGAGTGAATTCAAAA						[210]
Arytaina_adenocarpi_MO	GAGAATCTCTACTTTCTAAGCGTTTAAATAATTTTTAATACAACCTTTAATATAGTTGAGTGAATTCAAAA						[210]
Arytaina_devia_T	GAGAATCTTTATATCTAAACGCTCATAATTTTTAATAGAACTTTACTATAAATTGAATGAATTCAAAA						[210]
Arytaina_devia_G	GAGAATCTTTATATCTAAACGCTCATAATTTTTAATAGAACTTTACTATAAATTGAATGAATTCAAAA						[210]
Arytaina_devia_ssp_insularis_C	GGGAATCTTTATAGCAAAACGCTATAATAATTTTTAATACAACCTTTACTATAAATTGAATGAATTCAAAA						[210]
Arytaina_devia_ssp_insularis_P	GAGAATCTTTATATCTAAACGCTCATAAATTTTTAATACAACCTTTACTATAAATTGAATGAATTCAAAA						[210]
Arytaina_genistae_SC	GAGAATCCTTAGTATCTAAACGTTTATACTCTTTAATACAACCTTTACTATAAATTGAATGAATTCAAAA						[210]
Arytaina_genistae_PO	GAGAATCCTTAGTATCTAAACGTTTATACTCTTTAATACAACCTTTACTATAAATTGAATGAATTCAAAA						[210]
Arytaina_genistae_MO	GAGAATCCTTAGTATCTAAACGTTTATACTCTTTAATACAACCTTTACTATAAATTGAATGAATTCAAAA						[210]
Arytaina_nubivaga	GAGAATCTTTATATCTAAACGTTTATAAATTTTTAATACAACCTTTACTATAAATTGAATGAATTCAAAA						[210]
Arytaina_sp.14	GAGAATCTTTATATCTAAACGTTTATAAATTTTTAATACAACCTTTACTATAAATTGAATGAATTCAAAA						[210]
Arytainilla_cognata	GAGAATCCTTTATCTCTAAACGTTTATAAATCTTTAATACAACCTTTTCTATAAATTGAATGAATTCAAAA						[210]
Arytainilla_cytisi	GAGAATCCTTTTAACTAAACGATTAAATTTTTAATACTTCTTTTTATAAATTGAATGAATTCAAAA						[210]
Arytainilla_delarbrei	GAGAATCACTAGTATCTAAACGATTAAATTTTTAACAACCTTTTCTATAAATTGAATGAATTCAAAA						[210]
Arytainilla_diluta_C	GAGAATCCTTTGTGCTAAACGATTCTTAATTTTTAATACAACCTTTTCTATAAATTGAATGAATTCAAAA						[210]
Arytainilla_diluta_T	GAGAATCCTTTGTGCTAAACGATTCTTAATTTTTAATACAACCTTTTCTATAAATTGAATGAATTCAAAA						[210]
Arytainilla_dividens_C	GAGAATCATTATATAACAAAACGTTTATAAATTTTTAACAACCTTTTCTATAAATTGAATGAATTCAAAA						[210]
Arytainilla_dividens_T	GAGAATCCTTTATAACAAAACGTTTATAAATTTTTAACAACCTTTTCTATAAATTGAATGAATTCAAAA						[210]
Arytainilla_dividens_G	GAGAATCCTTTATAACAAAACGTTTATAAATTTTTAACAACCTTTTCTATAAATTGAATGAATTCAAAA						[210]
Arytainilla_equitans	GAGAATCCTTTAATTTTCAAACGTTTATAAATCTTTAATACAACCTTTTCTATAAATTGAATGAATTCAAAA						[210]
Arytainilla_hakani	GAGAATCCTTTGTCTCTAAACGTTGTTAATCTTTAACAACCTTTTCTATAAATTGAATGAATTCAAAA						[210]
Arytainilla_ima	GAGAAGCTTTAATTTCTAAACGTTAATCTTTAATACAACCTTTTCTATAAATTGAATGAATTCAAAA						[210]
Arytainilla_incuba	GAGAATCCTTTATTTCTAAACGTTTATAAATCTTTAACAACCTTTTCTATAAATTGAATGAATTCAAAA						[210]
Arytainilla_modica_Teline_P	GAGAATCCTTTGTAAACAAAACGTTTATAAATTTTTAACAACCTTTTCTATAAATTGAATGAATTCAAAA						[210]
Arytainilla_modica_Cham_P	GAGAATCCTTTGTAAACAAAACGTTTATAAATTTTTAACAACCTTTTCTATAAATTGAATGAATTCAAAA						[210]
Arytainilla_modica_Teline_H	GAGAATCCTTTGTAAACAAAACGTTTATAAATTTTTAACAACCTTTTCTATAAATTGAATGAATTCAAAA						[210]
Arytainilla_modica_Cham_H	GAGAATCCTTTGTAAACAAAACGTTTATAAATTTTTAACAACCTTTTCTATAAATTGAATGAATTCAAAA						[210]
Arytainilla_nigralineata_C	GAGAATCATTATATCTAAACGATTAAATTTTTAACAACCTTTTCTATAAATTGAATGAATTCAAAA						[210]
Arytainilla_nigralineata_T	GAGAATCATTATATCTAAACGATTAAATTTTTAACAACCTTTTCTATAAATTGAATGAATTCAAAA						[210]
Arytainilla_nigralineata_G	GAGAATCATTATATCTAAACGTTTATAAATTTTTAACAACCTTTTCTATAAATTGAATGAATTCAAAA						[210]
Arytainilla_pileolata_T.can	GAGAATCCTTTATATCTAAACGTTTATAAATCTTTAACAACCTTTTCTATAAATTGAATGAATTCAAAA						[210]
Arytainilla_pileolata_T.osy	GAGAATCCTTTATATCTAAACGTTTATAAATCTTTAACAACCTTTTCTATAAATTGAATGAATTCAAAA						[210]
Arytainilla_proboscidea_A.vis_T	GAGAATCCTTTGTATCTAAACGATTATAAATTTTTCAACAACCTTTTCTATAAATTGAATGAATTCAAAA						[210]
Arytainilla_proboscidea_A.fol_P	GAGAATCCTTTGTATCTAAACGATTATAAATTTTTCAACAACCTTTTCTATAAATTGAATGAATTCAAAA						[210]
Arytainilla_prognata	GAGAATCCTTTGTATCTAAACGATTATAAATTTTTAATACAACCTTTTCTATAAATTGAATGAATTCAAAA						[210]
Arytainilla_spartiophila_PO	GAGAATCCTTTGTATCTAAACGATTATAAATTTTTAATACAACCTTTTCTATAAATTGAATGAATTCAAAA						[210]
Arytainilla_spartiophila_SP	GAGAATCCTTTGTATCTAAACGATTATAAATTTTTAATACAACCTTTTCTATAAATTGAATGAATTCAAAA						[210]
Arytainilla_spartiophila_MO	GAGAATCCTTTGTATATAAACGATTACTTATTTTTAATACTTCTTTTTATAAATTGAATGAATTCAAAA						[210]
Arytainilla_sulci	GGGAATCGTTATCTAAACGCTTATAAATTTTTAATACAACCTTTTCTATAAATTGAATGAATTCAAAA						[210]
Arytainilla_umbonata	GAGAATCCTTTATCTCTAAACGTTTATAAATCTTTAACAACCTTTTCTATAAATTGAATGAATTCAAAA						[210]
Arytainilla_sp.1	GAGAATCCTTTAGTGTCAAAACGATTAAATTTTTAATACCCTTTTCTATAAATTGAATGAATTCAAAA						[210]
Arytainilla_sp.2	GAGAATCCTTTATATCTAAACGTTTATAAATTTTTAATACAACCTTTTCTATAAATTGAATGAATTCAAAA						[210]
Arytainilla_sp.3	GGGAATCCTTTATAGCCAAACGCTAATTTTTAGTACTTCTTTTTCTATAAATTGAATGAATTCAAAA						[210]
Arytainilla_sp.4_SP	GAGAATCCTTAATATCTAAACGATTAAATTTTTAATACAACCTTTTCTATAAATTGAATGAATTCAAAA						[210]
Arytainilla_sp.4_MO	GAGAATCCTTAATATCTAAACGATTAAATTTTTAATACAACCTTTTCTATAAATTGAATGAATTCAAAA						[210]
Arytainilla_sp.5	GAGAATCCTTTATATCTAAACGATTAAATTTTTAATACAACCTTTACTATAAATTGAATGAATTCAAAA						[210]
Arytainilla_sp.6	GAGAATCCTTTATATCTAAACGATTATAAATCTTTAACAACCTTTCTCTATAAATTGAATGAATTCAAAA						[210]
Arytainilla_sp.7	GAGAATCCTTTAATCTAAACGTTTATAAATCTTTAATACAACCTTTTCTATAAATTGAATGAATTCAAAA						[210]
Arytainilla_sp.8	GAGAATCCTTAATAACAAAACGTTTATAAATTTTTAACAACCTTTTCTATAAATTGAATGAATTCAAAA						[210]
Arytainilla_sp.9	GAGAATCCTTTGTATCTAAACGTTTATAAATTTTTAATACAACCTTTTCTATAAATTGAATGAATTCAAAA						[210]
Arytainilla_sp.10_P	GAGAATCCTTGATTTCAAACGTTTATAAATCTTTAACAACCTTTTCTATAAATTGAATGAATTCAAAA						[210]
Arytainilla_sp.10_H	GAGAATCCTTAGTTTCAAACGTTTATAAATCTTTAATACAACCTTTTCTATAAATTGAATGAATTCAAAA						[210]
Arytainilla_sp.11	GAGAATCCTTAATTTCAAACGTTTATAAATCTTTAATACAACCTTTTCTATAAATTGAATGAATTCAAAA						[210]
Arytainilla_sp.12	GAGAATCCTTTGTAAACGCTTATAAATTTTTAACAACCTTTTCTATAAATTGAATGAATTCAAAA						[210]
Arytainilla_sp.13	GAGAATCCTTTATCTCTAAACGTTTACTAATTTTTAATACAACCTTTTCTATAAATTGAATGAATTCAAAA						[210]
Cacopsylla_alaterni	GAGAATCCTTTACAGCAAAAACGTTAATTTTTAACAACCTTTGCAATAAATTGAATGAATTCAAAA						[210]
Cacopsylla_mali	GAGAATCCTTTATATGTAACGCTAATGATTTTCAATACAACATTCGCTATAAATTGAGTGAATTCAAAA						[210]
Cyamophila_prohaskai	GAGAATCCTTAATTTGTTAAACGTTAATTTTTAACAACCTAATTTTTCTATAAATTGAATGAGCACAAAA						[210]
Livilla_adusta	GAGAATCATTAAATTTCTAAACGATTAAATTTTTCAATATAAATTTTCTATAAATTGAATGAATTCAAAA						[210]
Livilla_blandula	GAGAATCATTAACTTCGAAACGATTGTTATCTTCAGTACAACCTTTTCTATAAATTGAGTGAATTCAAAA						[210]
Livilla_maura	GAGAATCATTAGCTTTCGAAACGATTGTTATCTTCAGTACAACCTTTTCTATAAATTGAGTGAATTCAAAA						[210]
Livilla_monospermae_T	GAGAATCCTTTACTCTCTAAACGACTCCTAATTTTTCAATAGAACCTTTTCAATAAATTGAATGAATTCAAAA						[210]
Livilla_monospermae_G	GAGAATCCTTTACTCTCTAAACGCTCCTAATTTTTAATAGAACCTTTTCAATAAATTGAATGAATTCAAAA						[210]
Livilla_monospermae_P	GAGAATCCTTTACTCTCTAAACGCTCCTAATTTTTCAATACAACCTTTTCAATAAATTGAATGAATTCAAAA						[210]
Livilla_retamae	GAGAATCCTTTGTTTCTAAACGACTCCTAATTTTTCAATAGAACCTTTTCAATAAATTGAATGAATTCAAAA						[210]
Livilla_variegata	GAGAATCATTAGTTTCTAAACGATTAAATTTTTCAAGTACAACCTTTTCTATAAATTGAGTGAATTCAAAA						[210]
Livilla_sp.15	GAGAAGCTTTAGTTTCAAACGCTTAAATTTTTAATACAACCTTTTCTATAAATTGAATGAATTCAAAA						[210]
Livilla_sp.16	GAGAAGCTTTAGTTTCTAAACGCTAATTTTTAATACAACCTTTTCTATAAATTGAATGAATTCAAAA						[210]
Livilla_sp.17	GAGAAGCTTTATCTCTAAACGATTAAATTTTTAATACAACCTTTTCTATAAATTGAATGAGTGAATTCAAAA						[210]
Pseudacanthopsylla_improvisa	GAGAATCATTATTTCTAAACGATTAAATTTTTAATACAACCTTTTCTATAAATTGAATGAGTGAATTCAAAA						[210]

APPENDIX 3 cont.

	220	230	240	250	260	270	280]
							COI 3' [tRNA leucine 5'
Acizzia_hollisi	TTCCCTCCATTAGAACACAGATACTCTGAAATCCCATCAATTTTAATTAATAA	----	TACTATTGTGTCAG				[276]
Acizzia_uncatoides	TTTCCCACCTATAGAACATAGTTATTTCAGAAATTCCTTCTATCTTAATTAATAAATAAATACTAATGTGTCAG						[280]
Arytaina_adenocarpi_PO	CTTCCCCCTATAGAACATAGTTATTCTGAAATCCCACAATTTCAATTAATAA	----	ACTAATGTGTCAG				[277]
Arytaina_adenocarpi_SP	CTTCCCCCTATAGAACATAGTTATTCTGAAATCCCACAATTTCAATTAATAA	----	ACTAATGTGTCAG				[277]
Arytaina_adenocarpi_MO	CTTCCCCCTATAGAACATAGTTATTCTGAAATCCCACAATTTCAATTAATAA	----	ACTAATGTGTCAG				[277]
Arytaina_devia_T	CTTTCCCTCCTATAGAACATAGTTACTCTGAAATTCCTACAATTTCAATTAATAA	----	ACTAATGTGTCAG				[277]
Arytaina_devia_G	CTTTCCCTCCTATAGAACATAGTTACTCTGAAATTCCTACAATTTCAATTAATAA	----	ACTAATGTGTCAG				[277]
Arytaina_devia_ssp_insularis_C	TTTTCCCTCCTATAGAACATAGTTATTCTGAAATCCCACAATTTCAAGTTAAATA	----	ACTAATGTGTCAG				[277]
Arytaina_devia_ssp_insularis_P	CTTCCCCCATAGAACATAGTTACTCTGAAATCCCACAATTTCAATTAATAA	----	ACTAATGTGTCAG				[277]
Arytaina_genistae_SC	TTTTCCCCCATAGAACATAGTTACTCTGAAATCCCACAATTTAGTTAAATA	----	ACTAATGTGTCAG				[277]
Arytaina_genistae_PO	TTTTCCCCCATAGAACATAGTTACTCTGAAATCCCACAATTTAGTTAAATA	----	ACTAATGTGTCAG				[277]
Arytaina_genistae_MO	TTTTCCCCCATAGAACATAGTTACTCTGAAATCCCACAATTTAGTTAAATA	----	ACTAATGTGTCAG				[277]
Arytaina_nubivaga	CTTTCCACCCATAGAACATAGTTATTCTGAAATCCCACAATTTCAATTAATAA	----	ACTAATGTGTCAG				[277]
Arytaina_sp.14	CTTTCCCTCCTATAGAACATAGTTACTCTGAAATCCCACAATTTCAATTAATAA	----	ACTAATGTGTCAG				[277]
Arytainilla_cognata	TTTTCCCCGATTGAACACAGATACTCTGAAATCCCAGCAATTTTAATTAAGTA	----	ACTAATGTGTCAG				[277]
Arytainilla_cytisi	TTTTCCCTCCTATAGAACATAGTTATTCTGAGATTCCTGCAATTTTAATTAAGTA	----	ACTAATGTGTCAG				[277]
Arytainilla_delarbrei	TTTTCCCTCCTATAGAACATAGTTACTCTGAAATTCCTGCTACTTTAGTTAAATA	----	ACTAATGTGTCAG				[277]
Arytainilla_diluta_C	TTTTCCCTCCTATAGAACACAGATACTCTGAAATTCCTACAATTTTAATTAAGTA	----	ACTAATGTGTCAG				[277]
Arytainilla_diluta_T	TTTTCCCTCCTATAGAACACAGATACTCTGAAATTCCTACAATTTTAATTAAGTA	----	ACTAATGTGTCAG				[277]
Arytainilla_dividens_C	CTTCCCCCAATTGAACATAGATACTCTGAAATTCCTGCAATTTTAATTAAGTA	----	ACTAATGTGTCAG				[277]
Arytainilla_dividens_T	CTTCCCCCAATTGAACATAGATACTCTGAAATTCCTGCAATTTTAATTAAGTA	----	ACTAATGTGTCAG				[277]
Arytainilla_dividens_G	CTTCCCCCAATTGAACATAGATACTCTGAAATTCCTGCAATTTTAATTAAGTA	----	ACTAATGTGTCAG				[277]
Arytainilla_equitans	TTTTCCCTCCTATAGAACATAGTTACTCTGAAATTCCTGCAATTTTAATTAAGTA	----	ACTAATGTGTCAG				[277]
Arytainilla_hakani	TTTTCCCTCCTATAGAACATAGATACTCTGAAATTCCTGCAATTTTAATTAAGTA	----	ACTAATGTGTCAG				[277]
Arytainilla_ima	TTTTCCCTCCTATAGAACACAGATACTCTGAAATTCCTACAATTTTAATTAAGTA	----	ACTAATGTGTCAG				[277]
Arytainilla_incuba	TTTTCCCTCCTATAGAACATAGATACTCTGAAATTCCTGCAATTTTAATTAAGTA	----	ACTAATGTGTCAG				[277]
Arytainilla_modica_Teline_P	CTTCCCCCAATTGAACATAGATACTCTGAAATTCCTGCAATTTTAATTAAGTA	----	ACTAATGTGTCAG				[277]
Arytainilla_modica_Cham_P	CTTCCCCCAATTGAACATAGATACTCTGAAATTCCTGCAATTTTAATTAAGTA	----	ACTAATGTGTCAG				[277]
Arytainilla_modica_Teline_H	CTTCCCCCAATTGAACATAGATACTCTGAAATTCCTGCAATTTTAATTAAGTA	----	ACTAATGTGTCAG				[277]
Arytainilla_modica_Cham_H	CTTCCCCCAATTGAACATAGATACTCTGAAATTCCTGCAATTTTAATTAAGTA	----	ACTAATGTGTCAG				[277]
Arytainilla_nigrilineata_C	TTTTCCCTCCTATAGAACACAGATACTCTGAAATTCCTGCAATTTTAATTAAGTA	----	ACTAATGTGTCAG				[277]
Arytainilla_nigrilineata_T	TTTTCCCTCCTATAGAACACAGATACTCTGAAATTCCTGCAATTTTAATTAAGTA	----	ACTAATGTGTCAG				[277]
Arytainilla_nigrilineata_G	TTTTCCCTCCTATAGAACACAGATACTCTGAAATTCCTGCAATTTTAATTAAGTA	----	ACTAATGTGTCAG				[277]
Arytainilla_pileolata_T.can	TTTTCCCCCAATTGAACATAGATACTCTGAAATTCCTGCAATTTTAATTAAGTA	----	ACTAATGTGTCAG				[277]
Arytainilla_pileolata_T.osy	TTTTCCCCCAATTGAACATAGATACTCTGAAATTCCTGCAATTTTAATTAAGTA	----	ACTAATGTGTCAG				[277]
Arytainilla_proboscidea_A.vis_T	TTTTCCCTCCTATAGAACATAGTTACTCTGAAATTCCTGCAATTTTAATTAAGTA	----	ACTAATGTGTCAG				[277]
Arytainilla_proboscidea_A.fol_P	TTTTCCCTCCTATAGAACATAGTTACTCTGAAATTCCTGCAATTTTAATTAAGTA	----	ACTAATGTGTCAG				[277]
Arytainilla_prognata	TTTTCCCTCCTATAGAACATAGATACTCTGAAATTCCTGCAATTTTAATTAAGTA	----	ACTAATGTGTCAG				[277]
Arytainilla_spartiophila_PO	TTTTCCACCTGTTGAACACAGTTACTCTGAAATTCCTGCAATTTTAATTAAGTA	----	ACTAATGTGTCAG				[277]
Arytainilla_spartiophila_SP	TTTTCCACCTGTTGAACACAGTTACTCTGAAATTCCTGCAATTTTAATTAAGTA	----	ACTAATGTGTCAG				[277]
Arytainilla_spartiophila_MO	TTTTCCACCTGTTGAACACAGTTACTCTGAAATTCCTGCAATTTTAATTAAGTA	----	ACTAATGTGTCAG				[277]
Arytainilla_sulci	TTTTCCCCCAATTGAACATAGATACTCTGAAATTCCTACAATTTTAATTAATAA	----	ACTAATGTGTCAG				[277]
Arytainilla_umbonata	TTTTCCCTCCTATAGAACATAGATACTCTGAAATTCCTGCAATTTTAATTAAGTA	----	ACTAATGTGTCAG				[277]
Arytainilla_sp.1	TTTTCCCTCCTGCTGAACATAGCTACTCTGAAATTCCTGCAATTTTAATTAAGTA	----	ACTAATGTGTCAG				[277]
Arytainilla_sp.2	CTTTCCCCCAATTGAACATAGATACTCTGAAATTCCTGCAATTTTAATTAAGTA	----	ACTAATGTGTCAG				[277]
Arytainilla_sp.3	TTTTCCCTCCTATAGAACATAGTTACTCTGAGATTCCTGCAATTTTAATTAAGTA	----	ACTAATGTGTCAG				[277]
Arytainilla_sp.4_SP	TTACCCCTCCTATTGAACATAGTTACTCTGAAATTCCTACAATTTTAATTAAGTA	----	ACTAATGTGTCAG				[277]
Arytainilla_sp.4_MO	TTATCCCTCCTATTGAACATAGTTACTCTGAAATTCCTACAATTTTAATTAAGTA	----	ACTAATGTGTCAG				[277]
Arytainilla_sp.5	TTTTCCCTCCTATTGAACATAGATACTCTGAGATTCCTGCAATTTTAATTAAGTA	----	ACTAATGTGTCAG				[277]
Arytainilla_sp.6	TTTTCCCTCCTATTGAACATAGATACTCTGAAATTCCTGCAATTTTAATTAAGTA	----	ACTAATGTGTCAG				[277]
Arytainilla_sp.7	TTTTCCCTCCTATTGAACATAGATACTCTGAAATTCCTGCAATTTTAATTAAGTA	----	ACTAATGTGTCAG				[277]
Arytainilla_sp.8	TTTTCCCTCCTATTGAACATAGATACTCTGAAATTCCTGCAATTTTAATTAAGTA	----	ACTAATGTGTCAG				[277]
Arytainilla_sp.9	TTTTCCCTCCTATTGAACATAGATACTCTGAAATTCCTACAATTTTAATTAAGTA	----	ACTAATGTGTCAG				[277]
Arytainilla_sp.10_P	TTTTCCCTCCTATTGAACATAGATACTCTGAAATTCCTGCAATTTTAATTAAGTA	----	ACTAATGTGTCAG				[277]
Arytainilla_sp.10_H	TTTTCCCTCCTATTGAACATAGATACTCTGAAATTCCTGCAATTTTAATTAAGTA	----	ACTAATGTGTCAG				[277]
Arytainilla_sp.11	TTTTCCCTCCTATTGAACATAGATACTCTGAAATTCCTGCAATTTTAATTAAGTA	----	ACTAATGTGTCAG				[277]
Arytainilla_sp.12	CTTCCCCCAATTGAACATAGATACTCTGAAATTCCTGCAATTTTAATTAAGTA	----	ACTAATGTGTCAG				[277]
Arytainilla_sp.13	TTTTCCCCCAATTGAACACAGATACTCTGAAATTCCTGCAATTTTAATTAAGTA	----	ACTAATGTGTCAG				[277]
Cacopsylla_alaterni	TTTTCCCTCCTATTGAACATAGTTACTCTGAAATTCCTGCAATTTTAATTAAGTA	----	ACTAATGTGTCAG				[277]
Cacopsylla_mali	CTTTCCCTCCTCAGAACATAGTTATTCTGAGATCCCTTCAATCTTGAGTAAGTA	----	ACTAATGTGTCAG				[277]
Cyamophila_prohaskai	TTCTCCCTCCTCTGAACATAGTTATTCTGAAATTCCTTCAATTTTAACATAATA	----	ACTAATGTGTCAG				[277]
Livilla_adusta	TTTTCCCTCCTATTGAACATAGATACTCTGAAATTCCTGCAATTTTAATTAAGTA	----	ACTAATGTGTCAG				[277]
Livilla_blandula	TTTTCCCTCCTATTGAACATAGTTACTCTGAAATTCCTACAATTTTAATTAAGTA	----	ACTAATGTGTCAG				[277]
Livilla_maura	TTTTCCCTCCTATTGAACATAGATACTCTGAAATTCCTACAATTTTAATTAAGTA	----	ACTAATGTGTCAG				[277]
Livilla_monospermae_T	TTCCCCCTCCTATTGAGCATAGTTACTCTGAGATTCCTGCAATTTTAATTAAGTA	----	ACTAATGTGTCAG				[277]
Livilla_monospermae_G	TTCCCCCTCCTATTGAGCATAGTTACTCTGAGATTCCTGCAATTTTAATTAAGTA	----	ACTAATGTGTCAG				[277]
Livilla_monospermae_P	TTCTCCCTCCTATTGAACATAGTTACTCTGAAATTCCTGCAATTTTAATTAAGTA	----	ACTAATGTGTCAG				[277]
Livilla_retamae	TTCTCCCCCAATTGAACATAGTTACTCTGAGATTCCTGCAATTTTAATTAAGTA	----	ACTAATGTGTCAG				[277]
Livilla_variegata	TTTTCCCTCCTATTGAACACAGTTACTCTGAGATTCCTGCAATTTTAATTAAGTA	----	ACTAATGTGTCAG				[277]
Livilla_sp.15	TTTTCCCTCCTATTGAACATAGTTACTCTGAAATTCCTGCAATTTTAATTAAGTA	----	ACTAATGTGTCAG				[277]
Livilla_sp.16	TTTTCCACCAATTGAACATAGCTACTCTGAAATTCCTACAATTTTAATTAAGTA	----	ACTAATGTGTCAG				[277]
Livilla_sp.17	TTTTCCCTCCTATTGAACATAGTTACTCTGAAATTCCTGCAATTTTAATTAAGTA	----	ACTAATGTGTCAG				[277]
Pseudacanthopsylla_improvisa	TTTTCCCTCCTATAGAACATAGTTACTCTGAAATTCCTACAATTTTAATTAAGTA	----	ACTAATGTGTCAG				[277]

APPENDIX 3 cont.

	290	300	310	320	330	340	350]
[.]
[***** tRNA 3'] [COII 5'
Acizzia_hollisi	AGT--	AATGTATTA	AAATTTAAGATTTG	GAAATGAA--	T--	AAT-AA--	GTTCCCTTTAGTAATTGACTGA [336]
Acizzia_uncatoides	ATC-TAA	ATGTATTA	AAATTTAAGATTTA	AAATATGAA--	T--	TAC-TT--	ATTCCTTTAGTAATTGACTGA [342]
Arytaina_adenocarpi_PO	ACT-C-A	ATGTATTA	AAATTTAAGATTTA	AGTATGAA---	ATTT-TA--	TTCCCTTTAGTAATTGACTGA [337]	
Arytaina_adenocarpi_SP	ACT-C-A	ATGTATTA	AAATTTAAGATTTA	AGTATGAA---	ATTT-TA--	TTCCCTTTAGTAATTGACTGA [337]	
Arytaina_adenocarpi_MO	ACT-C-A	ATGTATTA	AAATTTAAGATTTA	AGTATGAA---	ATTT-TA--	TTCCCTTTAGTAATTGACTGA [337]	
Arytaina_devia_T	ATT-T-A	ATGTATTA	AAATTTAAGATTTA	AGTATGAG--	T--	TCCT-TT--	ATTCCTTTAGTAATTGACTGA [339]
Arytaina_devia_G	ATT-T-A	ATGTATTA	AAATTTAAGATTTA	AGTATGAG--	T--	TCCT-TT--	ATTCCTTTAGTAATTGACTGA [339]
Arytaina_devia_ssp_insularis_C	ATT-T-A	ATGTATTA	AAATTTAAGATTTA	AAATATGAA--	T--	TTT-TT--	ATTCCTTTAGTAATTGACTGA [338]
Arytaina_devia_ssp_insularis_P	ATT-T-A	ATGTATTA	AAATTTAAGATTTA	AGCCCTTTT-A---	TTCCCTTTAGTAATTGACTGA [340]		
Arytaina_genistae_SC	ATC-T-A	ATGTATTA	AAATTTAAGATTTA	AAATATGAA---	AAT-TA--	TTCCCTTTAGTAATTGACTGA [336]	
Arytaina_genistae_PO	ATC-T-A	ATGTATTA	AAATTTAAGATTTA	AGTATGAA---	AAT-TA--	TTCCCTTTAGTAATTGACTGA [336]	
Arytaina_nubivaga	ATC-T-A	ATGTATTA	AAATTTAAGATTTA	AGTATGAA--	AC-TTT-A---	TTCCCTTTAGTAATTGACTGA [337]	
Arytaina_sp.14	ATC-T-A	ATGTATTA	AAATTTAAGATTTA	AGTATGAA--	AC-TTT-A---	TTCCCTTTAGTAATTGACTGA [337]	
Arytainilla_cognata	AGT-C-A	ATGTATTA	AAATTTAAGATTTA	AGCTATGAA---	ATTT-TA--	TTCCCTTTAGTAATTGACTGA [337]	
Arytainilla_cytisi	AAT-C-A	ATGTATTA	AAATTTAAGATTTA	AGCTATGAA--	A-TTTT-AT--	ATTCCTTTAGTAATTGACTGA [339]	
Arytainilla_delarbrei	AAC-C-A	ATGTATTA	AAATTTAAGATTTA	AGCCATGAA--	A-TTTT-AT--	ATTCCTTTAGTAATTGACTGA [341]	
Arytainilla_diluta_C	AGT-C-A	ATGTATTA	AAATTTAAGATTTA	AGCTATGAA---	ATTT-TA--	TTCCCTTTAGTAATTGACTGA [337]	
Arytainilla_diluta_T	AGT-C-A	ATGTATTA	AAATTTAAGATTTA	AGCTATGAA---	ATTT-TA--	TTCCCTTTAGTAATTGACTGA [337]	
Arytainilla_dividens_C	AGT-C-A	ATGTACT	AAACTTTAAGATTTA	AGCTATGAA---	GTTTT-A---	TTCCCTTTAGTAATTGACTGA [337]	
Arytainilla_dividens_T	AGT-C-A	ATGTACT	AAACTTTAAGATTTA	AGATATGAA---	GTTTT-A---	TTCCCTTTAGTAATTGACTGA [337]	
Arytainilla_dividens_G	AGT-C-A	ATGTACT	AAACTTTAAGATTTA	AGCTATGAA---	GTTTT-A---	TTCCCTTTAGTAATTGACTGA [337]	
Arytainilla_equitans	AGT-C-A	ATGTACT	AAACTTTAAGATTTA	AGATATGAA---	ATTT-TA--	TTCCCTTTAGTAATTGACTGA [337]	
Arytainilla_hakani	AGT-C-A	ATGTACT	AAACTTTAAGATTTA	AGCTATGAA---	ATTT-TA--	TTCCCTTTAGTAATTGACTGA [337]	
Arytainilla_ima	ACC-T-A	ATGTATTA	AAATTTAAGATTTA	AAATATGAA---	ATTT-TA--	TTCCCTTTAGTAATTGACTGA [337]	
Arytainilla_incuba	AGT-C-A	ATGTACT	AAACTTTAAGATTTA	AGCTATGAA---	ATTT-TA--	TTCCCTTTAGTAATTGACTGA [337]	
Arytainilla_modica_Teline_P	AGT-C-A	ATGTACT	AAACTTTAAGATTTA	AGCTATGAA---	ATTT-TA--	TTCCCTTTAGTAATTGACTGA [337]	
Arytainilla_modica_Cham_P	AGT-C-A	ATGTACT	AAACTTTAAGATTTA	AGCTATGAA---	ATTT-TA--	TTCCCTTTAGTAATTGACTGA [337]	
Arytainilla_modica_Teline_H	AGT-C-A	ATGTACT	AAACTTTAAGATTTA	AGCTATGAA---	ATTT-TA--	TTCCCTTTAGTAATTGACTGA [337]	
Arytainilla_modica_Cham_H	AGT-C-A	ATGTACT	AAACTTTAAGATTTA	AGCTATGAA---	ATTT-TA--	TTCCCTTTAGTAATTGACTGA [337]	
Arytainilla_nigrilineata_C	AGT-C-A	ATGTACT	AAACTTTAAGATTTA	AGATATGAA---	ATTT-TA--	TTCCCTTTAGTAATTGACTGA [337]	
Arytainilla_nigrilineata_T	AGT-C-A	ATGTACT	AAACTTTAAGATTTA	AGATATGAA---	ATTT-TA--	TTCCCTTTAGTAATTGACTGA [337]	
Arytainilla_nigrilineata_G	AGT-C-A	ATGTACT	AAACTTTAAGATTTA	AGATATGAA---	ATTT-TA--	TTCCCTTTAGTAATTGACTGA [337]	
Arytainilla_pileolata_T.can	AGT-C-A	ATGTACT	AAACTTTAAGATTTA	AGATATGAA---	ATTT-TA--	TTCCCTTTAGTAATTGACTGA [337]	
Arytainilla_pileolata_T.osy	AGT-C-A	ATGTACT	AAACTTTAAGATTTA	AGTATGAA---	ATTT-TA--	TTCCCTTTAGTAATTGACTGA [337]	
Arytainilla_proboscidea_A.vis_T	AGT-C-A	ATGTACT	AAACTTTAAGATTTA	AGATATGAA---	AAAT-TA--	TTCCCTTTAGTAATTGACTGA [337]	
Arytainilla_proboscidea_A.fol_P	AGT-C-A	ATGTACT	AAACTTTAAGATTTA	AGATATGAA---	AAAT-TA--	TTCCCTTTAGTAATTGACTGA [337]	
Arytainilla_prognata	AGT-C-A	ATGTATTA	AAATTTAAGATTTA	ATCTATGAA--	GTTTTT-A---	TTCCCTTTAGTAATTGACTGA [338]	
Arytainilla_spartiophila_PO	AAT-C-A	ATGTATTA	AAATTTAAGATTTA	AACTATGAA--	A---TT----	TTCCCTTTAGTAATTGACTGA [335]	
Arytainilla_spartiophila_SP	AAT-C-A	ATGTATTA	AAATTTAAGATTTA	AACTATGAA--	A---TT----	TTCCCTTTAGTAATTGACTGA [335]	
Arytainilla_spartiophila_MO	AAT-C-A	ATGTATTA	AAATTTAAGATTTA	AACTATGAA--	A---TT----	TTCCCTTTAGTAATTGACTGA [335]	
Arytainilla_sulci	ACC-C-A	ATGTATTA	AAATTTAAGATTTA	AGTATGAA---	AACT-TA--	TTCCCTTTAGTAATTGACTGA [337]	
Arytainilla_umbonata	AGT-C-A	ATGTACT	AAACTTTAAGATTTA	AGCTATGAA---	ATTT-TA--	TTCCCTTTAGTAATTGACTGA [337]	
Arytainilla_sp.1	AAT-C-A	ATGTATTA	AAATTTAAGATTTA	AAATATGAA--	A-TTTT-TT--	ATTCCTTTAGTAATTGACTGA [339]	
Arytainilla_sp.2	AAATC-A	ATGTATTA	AAATTTAAGATTTA	AACTATGAA---	ATTT-TA--	TTCCCTTTAGTAATTGACTGA [338]	
Arytainilla_sp.3	AAT-C-A	ATGTATTA	AAATTTAAGATTTA	AACTATGAA--	A-TTTT-AT--	ATTCCTTTAGTAATTGACTGA [339]	
Arytainilla_sp.4_SP	AAC-T-A	ATGTATTA	AAATTTAAGATTTA	AACTATGAA--	A-TTTT-TT--	ATTCCTTTAGTAATTGACTGA [339]	
Arytainilla_sp.4_MO	AAC-T-A	ATGTATTA	AAATTTAAGATTTA	AACTATGAA--	A-TTTT-TT--	ATTCCTTTAGTAATTGACTGA [339]	
Arytainilla_sp.5	AGT-C-A	ATGTACT	AAACTTTAAGATTTA	AGATATGAA---	ATTT-TA--	TTCCCTTTAGTAATTGACTGA [337]	
Arytainilla_sp.6	AGT-C-A	ATGTATTA	AAATTTAAGATTTA	AGTTATGAA---	ATTT-TA--	TTCCCTTTAGTAATTGACTGA [337]	
Arytainilla_sp.7	AGT-C-A	ATGTATTA	AAATTTAAGATTTA	AGATATGAA---	ATTT-TA--	TTCCCTTTAGTAATTGACTGA [337]	
Arytainilla_sp.8	AGT-C-A	ATGTACT	AAACTTTAAGATTTA	AGCTATGAA---	ATTT-TA--	TTCCCTTTAGTAATTGACTGA [337]	
Arytainilla_sp.9	AGT-C-A	ATGTATTA	AAATTTAAGATTTA	AGTATGAA---	ATTT-TA--	TTCCCTTTAGTAATTGACTGA [337]	
Arytainilla_sp.10_P	AGT-C-A	ATGTACT	AAACTTTAAGATTTA	AGCTATGAA---	ATTTT-TT--	ATTCCTTTAGTAATTGACTGA [339]	
Arytainilla_sp.10_H	AGT-C-A	ATGTACT	AAACTTTAAGATTTA	AGCTATGAA--	A-TTTT-TT--	ATTCCTTTAGTAATTGACTGA [339]	
Arytainilla_sp.11	AGT-C-A	ATGTACT	AAACTTTAAGATTTA	AGCTATGAA---	ATTT-TA--	TTCCCTTTAGTAATTGACTGA [337]	
Arytainilla_sp.12	AGT-C-A	ATGTACT	AAACTTTAAGATTTA	AGCTATGAA---	ATTT-TA--	TTCCCTTTAGTAATTGACTGA [337]	
Arytainilla_sp.13	AGT-C-A	ATGTACT	AAACTTTAAGATTTA	AGCCATGAA---	ATTT-TA--	TTCCCTTTAGTAATTGACTGA [337]	
Cacopsylla_alaterni	AAA--	AATGTATTA	AAATTTAAGATTTA	AGTATGAA---	ATTT-TA--	TTCCCTTTAGTAATTGACTGA [336]	
Cacopsylla_mali	AAA-CAA	ATGTATTA	AAATTTAAGATTTA	AGTATGAA--	G-TCTT-TT--	ATTCCTTTAGTAATTGACTGA [340]	
Cyamophila_prohaskai	AAA-C-A	ATGTATTA	AAATTTAAGATTTA	AAATATGAA---	ATAT-TA--	CTCCCTTTAGTAATTGACTGA [337]	
Livilla_adusta	AGT-C-A	ATGTATTA	AAATTTAAGATTTA	AGTTATGAA--	A-AATT-TT--	ATTCCTTTAGTAATTGACTGA [339]	
Livilla_blandula	AAC-C-A	ATGTATTA	AAATTTAAGATTTA	AACTATGAA---	ATTT-TA--	TTCCCTTTAGTAATTGACTGA [337]	
Livilla_maura	AAC-C-A	ATGTATTA	AAATTTAAGATTTA	AACTATGAA--	ATTTTT-A---	TTCCCTTTAGTAATTGACTGA [338]	
Livilla_monospermae_T	AAG-T-A	ATGTATTA	AAATTTAAGATTTA	AAATATGAA--	ATTTTT-A---	TTCCCTTTAGTAATTGACTGA [338]	
Livilla_monospermae_G	AAG-T-A	ATGTATTA	AAATTTAAGATTTA	AAATATGAA--	ATTTTT-A---	TTCCCTTTAGTAATTGACTGA [338]	
Livilla_monospermae_P	AAG-T-A	ATGTATTA	AAATTTAAGATTTA	AAATATGAA--	ATTTTT-A---	TTCCCTTTAGTAATTGACTGA [338]	
Livilla_retamae	AGA-T-A	ATGTATTA	AAATTTAAGATTTA	AACTATGAA---	ATTA-TA--	TTCCCTTTAGTAATTGACTGA [337]	
Livilla_variegata	AGT-T-A	ATGTATTA	AAATTTAAGATTTA	AGTATGAA--	AAAGTT-TT--	ATTCCTTTAGTAATTGACTGA [340]	
Livilla_sp.15	AAG-CAA	ATGTATTA	AAATTTAAGATTTA	AAATATGAA---	ACCT-TA--	TTCCCTTTAGTAATTGACTGA [338]	
Livilla_sp.16	AGC-T-A	ATGTATTA	AAATTTAAGATTTA	AAATATGAA---	ATTT-TA--	TTCCCTTTAGTAATTGACTGA [337]	
Livilla_sp.17	ACC-T-A	ATGTATTA	AAATTTAAGATTTA	AAATATGAA---	ATTT-TA--	TTCCCTTTAGTAATTGACTGA [337]	
Pseudacanthopsylla_improvisa	ATT-C-A	ATGTATTA	AAATTTAAGATTTA	AAATATGAA---	AAACA-CTA--	TTCCCTTTAGTAATTGACTGA [338]	

APPENDIX 3 cont.

[360	370	380	390	400	410	420]
[.]
Acizzia_hollisi	ATAAAAGTATCTCTTTATGATAATGCCTCCCTTATTATAGAACAACCTAATTTTATTTTCATGATTATAGAA						[406]
Acizzia_uncatoides	CTAAAAATTTCTCTATATGATAATGCCTCACCATTATAGAACAACCTAATTTTATTTTCATGATTATAGAA						[412]
Arytaina_adenocarpi_PO	ATAAAAATTTTCATTGTATGACAATGCATCACCATTATAGAACAATTAACCTATTCCATGATTACAGAA						[407]
Arytaina_adenocarpi_SP	ATAAAAATTTTCATTGTATGACAATGCATCACCATTATAGAACAATTAACCTATTCCATGATTACAGAA						[407]
Arytaina_adenocarpi_MO	ATAAAAATTTTCATTGTATGACAATGCATCACCATTATAGAACAATTAACCTATTCCATGATTACAGAA						[407]
Arytaina_devia_T	ATAAAAATTTTCATTATATGATAATGCATCTCCAATTATAGAACAATTAATCATATTTTCATGACTATAGTA						[409]
Arytaina_devia_G	ATAAAAATTTTCATTATATGATAATGCATCTCCAATTATAGAACAATTAATCATATTTTCATGACTATAGTA						[409]
Arytaina_devia_ssp_insularis_C	ATAAAAATTTTCATTATACGATAATGCATCTCCAATTATAGAACAACCTAATTTTATTTTCATGATTATAGAA						[408]
Arytaina_devia_ssp_insularis_P	ATAAAAATTTTCATTATATGATAATGCATCACCATTATAGAACAATTAACCTATTCCATGATTATAGAA						[410]
Arytaina_genistae_SC	CTAAAAATTTTCATTATATGATAATGCCTCTCCAATTATAGAACAATTAATTTTATTTTCATGACTACAGAA						[406]
Arytaina_genistae_PO	CTAAAAATTTTCATTATATGATAATGCCTCTCCAATTATAGAACAATTAATTTTATTTTCATGACTACAGAA						[406]
Arytaina_genistae_MO	CTAAAAATTTTCATTATATGATAATGCCTCTCCAATTATAGAACAATTAATTTTATTTTCATGACTACAGAA						[406]
Arytaina_nubivaga	ATAAAAATTTTCATTATATGATAATGCCTCACCATTATAGAACAATTAACCTATTCCATGATTATAGAA						[407]
Arytaina_sp.14	ATAAAAATTTTCATTGTATGATAATGCCTCACCATTATAGAACAATTAACCTATTCCATGATTATAGTA						[407]
Arytainilla_cognata	ATAAAAATTTTCACTTTTTGACAATGCCTCACCATTATAGAACAATTAACCTTTATTTTCATGATTACAGTA						[407]
Arytainilla_cytisi	ATAAAAATTTTCACTTTTGATAATGCCTCTCCAATTATAGAACAATTAATTTTATTTTCATGATTACAGTA						[409]
Arytainilla_delarbrei	ATAAAAATTTTCACTTTTGACAATGCCTCACCATTATAGAACAATTAATTTTATTTTCATGATTACAGTA						[411]
Arytainilla_diluta_C	ATAAAAATTTTCGCTTTTTGACAATGCCTCACCATTATAGAACAATTAACCTTTATTTTCATGATTATAGTA						[407]
Arytainilla_diluta_T	ATAAAAATTTTCGCTTTTTGACAATGCCTCACCATTATAGAACAATTAACCTTTATTTTCATGATTATAGTA						[407]
Arytainilla_dividens_C	ATAAAAATTTTCACTTTTGACAATGCCTCACCATTATAGAACAATTAACCTATTCCATGATTATAGTA						[407]
Arytainilla_dividens_T	ATAAAAATTTTCACTTTTGACAATGCCTCACCATTATAGAACAATTAACCTATTCCACGATTACAGTA						[407]
Arytainilla_dividens_G	ATAAAAATTTTCACTTTTGACAATGCCTCACCATTATAGAACAATTAACCTATTCCACGATTACAGTA						[407]
Arytainilla_equitans	ATAAAAATTTTCACTTTTGACAATGCCTCACCATTATAGAACAATTAACCTATTCCATGATTACAGTA						[407]
Arytainilla_hakani	ATAAAAATTTTCACTTTTGACAATGCCTCACCATTATAGAACAATTAACCTATTCCATGATTACAGTA						[407]
Arytainilla_ima	ATAAAAATTTCTCTTTTTGATAATGCCTCACCATTATAGAACAATTAATTTTATTTTCATGATTATAGTA						[407]
Arytainilla_incuba	ATAAAAATTTTCACTTTTGACAATGCCTCACCATTATAGAACAATTAACCTATTCCATGATTACAGTA						[407]
Arytainilla_modica_Teline_P	ATAAAAATTTTCACTTTTGACAATGCCTCACCATTATAGAACAATTAACCTATTCCATGATTACAGTA						[407]
Arytainilla_modica_Cham_P	ATAAAAATTTTCACTTTTGACAATGCCTCACCATTATAGAACAATTAACCTATTCCATGATTACAGTA						[407]
Arytainilla_modica_Teline_H	ATAAAAATTTTCACTTTTGACAATGCCTCACCATTATAGAACAATTAACCTATTCCATGATTACAGTA						[407]
Arytainilla_modica_Cham_H	ATAAAAATTTTCACTTTTGACAATGCCTCACCATTATAGAACAATTAACCTATTCCATGATTACAGTA						[407]
Arytainilla_nigralineata_C	ATAAAAATTTTCACTTTTGACAATGCCTCACCATTATAGAACAATTAACCTATTCCATGATTACAGTA						[407]
Arytainilla_nigralineata_T	ATAAAAATTTTCACTTTTGACAATGCCTCACCATTATAGAACAATTAACCTATTCCATGATTACAGTA						[407]
Arytainilla_nigralineata_G	ATAAAAATTTTCACTTTTGACAATGCCTCACCATTATAGAACAATTAACCTATTCCATGATTACAGTA						[407]
Arytainilla_pileolata_T.can	ATAAAAATTTTCACTTTTGACAATGCCTCACCATTATAGAACAATTAACCTATTCCATGATTATAGTA						[407]
Arytainilla_pileolata_T.osy	ATAAAAATTTTCACTTTTGACAATGCCTCACCATTATAGAACAATTAACCTATTCCATGATTATAGTA						[407]
Arytainilla_proboscidea_A.vis_T	ATAAAAATTTTCACTTTTGATAATGCCTCACCATTATAGAACAATTAACCTATTCCATGATTACAGTA						[407]
Arytainilla_proboscidea_A.fol_P	ATAAAAATTTTCACTTTTGATAATGCCTCACCATTATAGAACAATTAACCTATTCCATGATTACAGTA						[407]
Arytainilla_prognata	ATAAAAATTTTCACTTTTGACAATGCCTCACCATTATAGAACAATTAACCTATTCCATGATTACAGTA						[408]
Arytainilla_spartiophila_PO	ATAAAAATTTTCATTTTTGACCATGCCTCACCATTATAGAACAATTAACCTATTCCATGATTATAGTA						[405]
Arytainilla_spartiophila_SP	ATAAAAATTTTCATTTTTGACCATGCCTCACCATTATAGAACAATTAACCTATTCCATGATTATAGTA						[405]
Arytainilla_spartiophila_MO	ATAAAAATTTTCATTTTTGACCATGCCTCACCATTATAGAACAATTAACCTATTCCATGATTATAGTA						[405]
Arytainilla_sulci	CTAAAAATTTTCACTTTTACGATAATGCCTCACCATTATAGAACAATTAACCTATTCCATGATTATAGTA						[407]
Arytainilla_umbonata	ATAAAAATTTTCACTTTTGACAATGCCTCACCATTATAGAACAATTAACCTATTCCATGATTACAGTA						[407]
Arytainilla_sp.1	ATAAAAATTTTCATTTTTGATAATGCCTCTCCAATTATAGAACAATTAACCTATTCCATGATTACAGTA						[409]
Arytainilla_sp.2	ATAAAAATTTTCATTTTTGATAATGCCTCTCCAATTATAGAACAATTAACCTATTCCATGATTATAGTA						[408]
Arytainilla_sp.3	ATAAAAATTTTCATTTTTGATAATGCCTCACCATTATAGAACAATTAATTTTATTTTCATGATTACAGTA						[409]
Arytainilla_sp.4_SP	ATAAAAATTTTCACTTTTGACAATGCATCACCATTATAGAACAATTAATTTTATTTTCATGATTACAGAA						[409]
Arytainilla_sp.4_MO	ATAAAAATTTTCACTTTTGACAATGCATCACCATTATAGAACAATTAATTTTATTTTCATGATTACAGAA						[409]
Arytainilla_sp.5	ATAAAAATTTTCGCTTTTTGACAATGCCTCTCCAATTATAGAACAATTAACCTATTCCATGATTATAGAA						[407]
Arytainilla_sp.6	ATAAAAATTTTCACTTTTGACAATGCCTCACCATTATAGAACAATTAACCTATTCCATGATTACAGTA						[407]
Arytainilla_sp.7	ATAAAAATTTTCACTTTTGACAATGCCTCACCATTATAGAACAATTAACCTATTCCATGATTATAGTA						[407]
Arytainilla_sp.8	ATAAAAATTTTCACTTTTGACAATGCCTCACCATTATAGAACAATTAACCTATTCCATGATTATAGTA						[407]
Arytainilla_sp.9	ATAAAAATTTTCACTTTTGACAATGCCTCACCATTATAGAACAATTAACCTATTCCATGATTACAGTA						[407]
Arytainilla_sp.10_P	ATAAAAATTTTCACTTTTGACAATGCCTCACCATTATAGAACAATTAACCTATTCCATGATTATAGTA						[409]
Arytainilla_sp.10_H	ATAAAAATTTTCACTTTTGACAATGCCTCACCATTATAGAACAATTAACCTATTCCATGATTATAGTA						[409]
Arytainilla_sp.11	ATAAAAATTTTCACTTTTGACAATGCCTCACCATTATAGAACAATTAACCTATTCCATGATTACAGTA						[407]
Arytainilla_sp.12	ATAAAAATTTTCACTTTTGACAATGCCTCACCATTATAGAACAATTAACCTATTCCATGATTACAGTA						[407]
Arytainilla_sp.13	ATAAAAATTTTCACTTTTGACAACGCTCACCATTATAGAACAATTAACCTATTCCATGATTACAGTA						[407]
Cacopsylla_alaterni	ATAAAAATTTCTCTTTACGACAATGCATCACCATTATAGAACAATTAATTTTATTTTCATGATTACAGCA						[406]
Cacopsylla_mali	TTAAAAATTTTCGCTTTATGATAATGCCTCTCCAATTATAGAACAATTAATTTTATTTTCATGATTATAGAA						[410]
Cyamophila_prohaskai	ATAAAAATTTCTCTTTACGACAGTGCCTCTCCAATTATAGAACAATTAATTTTATTTTCATGATTACAGCA						[407]
Livilla_adusta	ATAAAAATTTCTCTTTGATAATGCCTCACCATTATAGAACAATTAACCTATTCCATGATTATAGTA						[409]
Livilla_blandula	ATAAAAATTTCTCTATTGATAATGCCTCACCATTATAGAACAATTAACCTATTCCATGATTATAGTA						[407]
Livilla_maura	ATAAAAATTTCTTTATGATAATGCCTCTCCAATTATAGAACAATTAACCTATTCCATGATTATAGTA						[408]
Livilla_monospermae_T	ATAAAAATTTTCACCTCTGACAATGCCTCACCATTATAGAACAATTAATTTCTGTTTCACGACTACAGTA						[408]
Livilla_monospermae_G	ATAAAGATTTTCACCTCTGACAATGCCTCACCATTATAGAACAATTAATTTCTGTTTCACGACTACAGTA						[408]
Livilla_monospermae_P	ATAAAAATTTTCACCTCTGACAACGCTCTCCAATTATAGAACAATTAATTTCTGTTTCACGACTACAGTA						[408]
Livilla_retamae	ATAAAAATTTTCACCTCTGACAATGCCTCACCATTATAGAACAATTAATTTCTGTTTCATGATTATAGTA						[407]
Livilla_variegata	ATAAAAATTTTCACTTTTGATAACGCTCTCTCATTATAGAACAATTAATTTTATTTTCATGATTACAGTA						[410]
Livilla_sp.15	ATAAAAATTTCTCTTTTTGATAATGCCTCTCCAATTATAGAACAATTAATTTTATTTTCACGATTAGAA						[408]
Livilla_sp.16	ATAAAAATTTCTCTTTATGATAATGCCTCTCCAATTATAGAACAATTAATTTTATTTTCATGATTACAGTA						[407]
Livilla_sp.17	AAAAATTTTCACTTTTGATAATGCCTCACCATTATAGAACAATTAATTTTATTTTCATGATTACAGTA						[407]
Pseudacanthopsylla_improvisa	CTAAAAATTTCTCTTTTTGATAATGCCTCACCATTATAGAACAATTAATTTTATTTTCATGATTACAGTA						[408]

APPENDIX 3 cont.

[430	440	450	460	470	480	490]
[.]
Acizzia_hollisi	TATTAATTATTACAACAATTTTATCAGTAGTTCCTTTTTTATATTTAAAAATAATTTTAAATAAATTTCT						[476]
Acizzia_uncatoides	TACTGATTATTTCTACAACCTCTCAGTAGTGTTCATTTTTTATATTTAAAAATAAATTTTAAATAAATTTT						[482]
Arytaina_adenocarp_i_PO	TATTAATTATCTCAAGCATTCTCTCTATTGTTTCATTCCTTTATAATAAAAAATAATTTATAAGAACCTTTAC						[477]
Arytaina_adenocarp_i_SP	TATTAATTATCTCAAGCATTCTCTCTATTGTTTCATTCCTTTATAATAAAAAATAATTTATAAGAACCTTTAC						[477]
Arytaina_adenocarp_i_MO	TATTAATTATCTCAAGCATTCTCTCTATTGTTTCGTTCTTTATAGTAAAAATAATTTATAAGAACCTTTAC						[477]
Arytaina_devia_T	TATTAATTATCTCAAGCATTCTCTCTATTGTTTCATTCCTTTTTTATAATAAAAAATAATTTATAAGAACCTTTAC						[479]
Arytaina_devia_G	TATTAATTATCTCAAGCATTCTCTCTATTGTTTCATTCCTTTTTTATAATAAAAAATAATTTATAAGAACCTTTAC						[479]
Arytaina_devia_ssp_insularis_C	TATTAATTATTACAAGTATTCCTCTCTATTGTTTCATTCCTTTTTTATAATAAAAAATAATTTACAAGAACCTTTAC						[478]
Arytaina_devia_ssp_insularis_P	TATTAATTATTACAAGCATTCTCTCTATTGTTTCATTCCTTTTTTATAATAAAAAATAATTTACAAGAACCTTTAC						[480]
Arytaina_genistae_SC	TATTAATTATTACAAGTATTCCTCTCTATTGTTTCATTCCTTTTTTATAATAAAAAATAATTTACAAGAACCTTTAC						[476]
Arytaina_genistae_PO	TATTAATTATTACAAGTATTCCTCTCTATTGTTTCATTCCTTTTTTATAATAAAAAATAATTTACAAGAACCTTTAC						[476]
Arytaina_genistae_MO	TATTAATTATTACAAGTATTCCTCTCTATTGTTTCATTCCTTTTTTATAATAAAAAATAATTTACAAGAACCTTTAC						[476]
Arytaina_nubivaga	TACTTATTATTCAAGTATTCCTCTCTATTGTTTCATTCCTTTTTTATAATAAAAAATAATTTATAAGAACCTTTAC						[477]
Arytaina_sp.14	TACTTATTATTCAAGTATTCCTCTCTATTGTTTCATTCCTTTTTTATAATAAAAAATAATTTATAAGAACCTTTAC						[477]
Arytainilla_cognata	TACTAATTATTTCTAGTATTTTATCTATTGTTTCATTCCTTTTTTATAATAAAAAATAATTTAAACAACCTTTAC						[477]
Arytainilla_cytisi	TATTGATTATTTCTAGTATTTTATCCATTGTTTCATTCCTTTTTTATAATAAAAAATAATTTAAATAAATTTTAC						[479]
Arytainilla_delarbrei	TAATAATTATTTTCAGTATTTTATCTATTGTTTCATTCCTTTTTTATAATAAAAAATAATTTAAATAAATTTTAC						[481]
Arytainilla_diluta_C	TACTCATTATTTCTAGTATTTTATCTATTGTTTCATTCATTATAGTTAAAAATAATTTTAAACAACCTTTAC						[477]
Arytainilla_diluta_T	TACTCATTATTTCTAGTATTTTATCTATTGTTTCATTCATTATAGTTAAAAATAATTTTAAACAACCTTTAC						[477]
Arytainilla_dividens_C	TACTAATTATTTCTAGTATTTTATCTATTGTTTCATTCATTATAATTAATAATAAATTTTAAACAACCTTTAC						[477]
Arytainilla_dividens_T	TACTAATTATTTCTAGTATTTTATCTATTGTTTCATTCATTATAATTAATAATAAATTTTAAACAACCTTTAC						[477]
Arytainilla_dividens_G	TACTAATTATTTCTAGTATTTTATCTATTGTTTCATTCATTATAATTAATAATAAATTTTAAACAACCTTTAC						[477]
Arytainilla_equitans	TACTAATTATTTCTAGTATTTTATCTATTGTTTCATTCATTATAATTAATAATAAATTTTAAACAACCTTTAC						[477]
Arytainilla_hakani	TATTAATTATTTCTAGTATTTTATCCATTGTTTCATTCATTATAATTAATAATAAATTTTAAACAACCTTTAC						[477]
Arytainilla_ima	TATTAATTATTTCTAGTATTTTATCTATTGTTTCATTCATTATAATTAATAATAAATTTTAAACAACCTTTAC						[477]
Arytainilla_incuba	TATTAATTATTTCTAGTATTTTATCCATTGTTTCATTCATTATAATTAATAATAAATTTTAAACAACCTTTAC						[477]
Arytainilla_modica_Teline_P	TACTAATTATTTCTAGTATTTTATCTATTGTTTCATTCATTATAATTAATAATAAATTTTAAACAACCTTTAC						[477]
Arytainilla_modica_Cham_P	TACTAATTATTTCTAGTATTTTATCTATTGTTTCATTCATTATAATTAATAATAAATTTTAAACAACCTTTAC						[477]
Arytainilla_modica_Teline_H	TACTAATTATTTCTAGTATTTTATCTATTGTTTCATTCATTATAATTAATAATAAATTTTAAACAACCTTTAC						[477]
Arytainilla_modica_Cham_H	TACTAATTATTTCTAGTATTTTATCTATTGTTTCATTCATTATAATTAATAATAAATTTTAAACAACCTTTAC						[477]
Arytainilla_nigralineata_C	TACTAATTATTTCTAGTATTTTATCTATTGTTTCATTCATTATAATTAATAATAAATTTTAAACAACCTTTAC						[477]
Arytainilla_nigralineata_T	TACTAATTATTTCTAGTATTTTATCTATTGTTTCATTCATTATAATTAATAATAAATTTTAAACAACCTTTAC						[477]
Arytainilla_nigralineata_G	TACTAATTATTTCTAGTATTTTATCTATTGTTTCATTCATTATAATTAATAATAAATTTTAAACAACCTTTAC						[477]
Arytainilla_pileolata_T.can	TATTAATTATTTCTAGTATTTTATCTATTGTTTCATTCATTATAATTAATAATAAATTTTAAACAACCTTTAC						[477]
Arytainilla_pileolata_T.osy	TATTAATTATTTCTAGTATTTTATCTATTGTTTCATTCATTATAATTAATAATAAATTTTAAACAACCTTTAC						[477]
Arytainilla_proboscidea_A.vis_T	TATTAATCATTTCAGTATTTTATCTATTGTTTCATTCATTATAATTAATAATAAATTTTAAACAACCTTTAC						[477]
Arytainilla_proboscidea_A.fol_P	TATTAATCATTTCAGTATTTTATCTATTGTTTCATTCATTATAATTAATAATAAATTTTAAACAACCTTTAC						[477]
Arytainilla_prognata	TACTCATTATTTCTAGTATTTTATCTATTGTTTCATTCATTATAATTAATAATAAATTTTAAACAACCTTTAC						[478]
Arytainilla_spartiophila_PO	TATTAATTATTTTTAGCATTTTTATCTATTGTTTCATTCATTATAATTAATAATAAATTTTAAACAACCTTTAC						[475]
Arytainilla_spartiophila_SP	TATTAATTATTTTTAGCATTTTTATCTATTGTTTCATTCATTATAATTAATAATAAATTTTAAACAACCTTTAC						[475]
Arytainilla_spartiophila_MO	TATTAATTATTTTTAGCATTTTTATCTATTGTTTCATTCATTATAATTAATAATAAATTTTAAACAACCTTTAC						[475]
Arytainilla_sulci	TACTTATTATTTTTACCATTCTCTCTATTGTTTCATTCATTATAATTAATAATAAATTTTAAACAACCTTTAC						[477]
Arytainilla_umbonata	TATTGATTATTTCTAGTATTTTATCCATTGTTTCATTCATTATAATTAATAATAAATTTTAAACAACCTTTAC						[477]
Arytainilla_sp.1	TACTAATCATTTCAGTATTTTATCTATTGTTTCATTCATTATAATTAATAATAAATTTTAAACAACCTTTAC						[479]
Arytainilla_sp.2	TATTAATTATTTCTAGTATTTTATCTATTGTTTCATTCATTATAATTAATAATAAATTTTAAACAACCTTTAC						[478]
Arytainilla_sp.3	TACTTATTATTTCTAGTATTTTATCTATTGTTTCATTCATTATAATTAATAATAAATTTTAAACAACCTTTAC						[479]
Arytainilla_sp.4_SP	TATTAATTATCTCCAGAAATTTTATCCATTGTTTCATTCATTATAATTAATAATAAATTTTAAACAACCTTTAC						[479]
Arytainilla_sp.4_MO	TACTAATTATCTCCAGAAATTTTATCTATTGTTTCATTCATTATAATTAATAATAAATTTTAAACAACCTTTAC						[479]
Arytainilla_sp.5	TACTCATTATTTCTAGTATTTTATCTATTGTTTCATTCATTATAACTAAAAATAGCTTTTAAACAACCTTTAC						[477]
Arytainilla_sp.6	TATTAATTATTTCTAGTATTTTATCTATTGTTTCATTCATTATAATTAATAATAAATTTTAAACAACCTTTAC						[477]
Arytainilla_sp.7	TACTAATTATTTCTAGTATTTTATCCATTGTTTCATTCATTATAATTAATAATAAATTTTAAACAACCTTTAC						[477]
Arytainilla_sp.8	TATTAATTATTTCTAGTATTTTATCTATTGTTTCATTCATTATAATTAATAATAAATTTTAAACAACCTTTAC						[477]
Arytainilla_sp.9	TACTAATTATCTCTAGTATTTTATCTATTGTTTCATTCATTATAATTAATAATAAATTTTAAACAACCTTTAC						[477]
Arytainilla_sp.10_P	TACTAATTATTTCTAGTATTTTATCCATTGTTTCATTCATTATAATTAATAATAAATTTTAAACAACCTTTAC						[479]
Arytainilla_sp.10_H	TATTAATTATTTCTAGTATTTTATCCATTGTTTCATTCATTATAATTAATAATAAATTTTAAACAACCTTTAC						[479]
Arytainilla_sp.11	TACTAATTATTTCAAGTATTTTATCCATCGTATCTTTTATAATAATAAATAAATTTTAAACAACCTTTAC						[477]
Arytainilla_sp.12	TACTAATTATTTCTAGTATTTTATCTATTGTTTCATTCATTATAATTAATAATAAATTTTAAACAACCTTTAC						[477]
Arytainilla_sp.13	TACTAATTATTTCTAGTATTTTATCTATTGTTTCATTCATTATAATTAATAATAAATTTTAAACAACCTTTAC						[477]
Cacopsylla_alaterni	TACTTATTATTTCTAGTATTTTATCAATGTTTCATTCATTATAATTAATAATAAATTTTAAACAACCTTTAC						[476]
Cacopsylla_mali	TACTAATTATTTCTAGTATTTTATCAATGTTTCATTCATTATAATTAATAATAAATTTTAAACAACCTTTAC						[480]
Cyamophila_prohaskai	TATTAATTATTATAAGAAATTTTCCATTGTTTCATTCATTATAATTAATAATAAATTTTAAACAACCTTTAC						[477]
Livilla_adusta	TGTTAATTATTTCTAGTATTTTATCTGTCGTTTCATTCATTATAATAAAAAATAATTTTAAACAACCTTTAC						[479]
Livilla_blandula	TACTAATTATTTCTAGTATTTTATCTGTTGTTTCATTCATTATAATAAAAAATAATTTTAAACAACCTTTAC						[477]
Livilla_maura	TACTAATTATTTCTAGTATTTTATCTGTTGTTTCATTCATTATAATAAAAAATAATTTTAAACAACCTTTAC						[478]
Livilla_monospermae_T	TATTAATTATTACAAGAAATTTTCTATTGTTTCATTCATTATAATAAAAAATAATTTTAAACAACCTTTAC						[478]
Livilla_monospermae_G	TATTAATCATTACCAGAAATTTTCTATTGTTTCATTCATTATAATAAAAAATAATTTTAAACAACCTTTAC						[478]
Livilla_monospermae_P	TATTAATTATTACAAGAAATTTTCTATTGTTTCATTCATTATAATAAAAAATAATTTTAAACAACCTTTAC						[478]
Livilla_retamae	TACTAATTATTTCAAGAAATTTTCTATTGTTTCATTCATTATAATAAAAAATAATTTTAAACAACCTTTAC						[477]
Livilla_variegata	TATTAATTATTTCTAGTATTTTATCCGTTGTTTCATTCATTATAATAAAAAATAATTTTAAACAACCTTTAC						[480]
Livilla_sp.15	TATTAATTATTTCAAGAAATTTTATCTATTGTTTCATTCATTATAATAAAAAATAATTTTAAACAACCTTTAC						[478]
Livilla_sp.16	TAGTAGTATTTCTAGTATTTTATCTATTGTTTCATTCATTATAATAAAAAATAATTTTAAACAACCTTTAC						[477]
Livilla_sp.17	TACTTATTATTTCTAGTATTTTATCTATTGTTTCATTCATTATAATAAAAAATAATTTTAAACAACCTTTAC						[477]
Pseudacanthopsylla_improvisa	TATTAATCATTGTTAGTAAATATCTATTGTTTCATTCATTATAATAAAAAATAATTTTAAACAACCTTTAC						[478]

APPENDIX 3 cont.

[500	510	520	530	540	550	560]
[.]
Acizzia_hollisi	CTCAAGAAGAATTC	CGAAAAATCAAGT	AAATTTGAAGTAA	TTTGAACATAAT	CCCAACTTAAT	TTTAAGA	[546]
Acizzia_uncatoides	ATCAAGAAGAATCT	TGAAAAACCAAT	TAATTTGAAGTAA	TTTGAACCTT	CTTACTATTAT	CTTAAGA	[552]
Arytaina_adenocarp_i_PO	TAGAAGTAAACTT	CTTGAAAAACCA	ATTAATTTGAAC	TTGTATGAAC	TAATTTCCCA	CAATTATTTA	[547]
Arytaina_adenocarp_i_SP	TAGAAGTAAACTT	CTTGAAAAACCA	ATTAATTTGAAC	TTGTATGAAC	TAATTTCCCA	CAATTATTTA	[547]
Arytaina_adenocarp_i_MO	CAGAAGTAAACTT	CTTGAAAAACCA	ATTAATTTGAAC	TTGTATGAAC	TAATTTCCCA	CAGTTATTTA	[547]
Arytaina_devia_T	TAGAATAAAAAAT	CTTGAAAAACCA	ATTAATTTGAAC	TTGTATGAAC	TAATTTCCCA	CAATTATTTA	[549]
Arytaina_devia_G	TAGAATAAAAAAT	CTTGAAAAACCA	ATTAATTTGAAC	TTGTATGAAC	TAATTTCCCA	CAATTATTTA	[549]
Arytaina_devia_ssp_insularis_C	TAGAATGAAAAT	TCTTGAAAAAT	CAATTACTTGA	ACTTTGTATG	AACCTTAAT	TCTACAGTTAT	[548]
Arytaina_devia_ssp_insularis_P	TAGAATAAAAAAT	CTTGAAAAACCA	ATTAATTTGAAC	TTGTATGAAC	TAATTTCCCA	CAATTATTTA	[550]
Arytaina_genistae_SC	AAGAAGAAAAAT	TCTTGAAAAAT	CAATTAATTT	GAAGTTGTAT	GAACCTTAAT	TCCCACTTTAT	[546]
Arytaina_genistae_PO	AAGAAGAAAAAT	TCTTGAAAAAT	CAATTAATTT	GAAGTTGTAT	GAACCTTAAT	TCCCACTTTAT	[546]
Arytaina_genistae_MO	AAGAAGAAAAAT	TCTTGAAAAAT	CAATTAATTT	GAAGTTGTAT	GAACCTTAAT	TCCCACTTTAT	[546]
Arytaina_nubivaga	CAGAAGAAAAAT	TCTTGAAAAAT	CAACTTATTT	GAACCTTTG	TATGAACCT	TAATTTCCCA	[547]
Arytaina_sp.14	CAGAAGAAAAAT	TCTTGAAAAAT	CAACTTATTT	GAACCTTTG	TATGAACCT	TAATTTCCCA	[547]
Arytainilla_cognata	TAGCACAAAAAT	TCTTGAAAAAT	CAAATAGTTG	AACCTTTGTG	TGAACCTTA	ATTTCCCA	[547]
Arytainilla_cytisi	TAGAAGAAAAAT	TCTTGAAAAAT	CAAATAATTT	GAACCTTAT	CATGAACCT	TATTTCCCA	[549]
Arytainilla_delarbrei	TAGAATAAACAT	TCTTGAAAAAT	CAAATAATTT	GAACCTTAT	CATGAACCT	TATTTCCCA	[551]
Arytainilla_diluta_C	TAGCACAAAAAT	TCTTGAAAAAT	CAAATAGTTG	AACCTTTGTG	TGAACCTTA	ATTTCCCA	[547]
Arytainilla_diluta_T	TAGCACAAAAAT	TCTTGAAAAAT	CAAATAGTTG	AACCTTTGTG	TGAACCTTA	ATTTCCCA	[547]
Arytainilla_dividens_C	TAGTACAAAAAT	TCTTGAAAAAT	CAAATAGTTG	AACCTTTGTG	TGAACCTTA	ATTTCCCA	[547]
Arytainilla_dividens_T	TAGTACAAAAAT	TCTTGAAAAAT	CAAATAGTTG	AACCTTTGTG	TGAACCTTA	ATTTCCCA	[547]
Arytainilla_dividens_G	TAGTACAAAAAT	TCTTGAAAAAT	CAAATAGTTG	AACCTTTGTG	TGAACCTTA	ATTTCCCA	[547]
Arytainilla_equitans	TAGAACAAAAAT	TCTTGAAAAAT	CAAATAGTTG	AACCTTTGTG	TGAACCTTA	ATTTCCCA	[547]
Arytainilla_hakani	TAGAACAAAAAT	TCTTGAAAAAT	CAAATAGTTG	AACCTTTGTG	TGAACCTTA	ATTTCCCA	[547]
Arytainilla_ima	CAGAACAAAAAT	TCTTGAAAAAT	CAACTTGTG	AACCTTTG	CACTTAAT	TCTTACTATT	[547]
Arytainilla_incuba	TAGAACAAAAAT	TCTTGAAAAAT	CAAATAGTTG	AACCTTTGTG	TGAACCTTA	ATTTCCCA	[547]
Arytainilla_modica_Teline_P	TAGTACAAAAAT	TCTTGAAAAAT	CAAATAGTTG	AACCTTTGTG	TGAACCTTA	ATTTCCCA	[547]
Arytainilla_modica_Teline_H	TAGTACAAAAAT	TCTTGAAAAAT	CAAATAGTTG	AACCTTTGTG	TGAACCTTA	ATTTCCCA	[547]
Arytainilla_modica_Cham_P	TAGTACAAAAAT	TCTTGAAAAAT	CAAATAGTTG	AACCTTTGTG	TGAACCTTA	ATTTCCCA	[547]
Arytainilla_modica_Cham_H	TAGTACAAAAAT	TCTTGAAAAAT	CAAATAGTTG	AACCTTTGTG	TGAACCTTA	ATTTCCCA	[547]
Arytainilla_nigralineata_C	TAGAACAAAAAT	TCTTGAAAAAT	CAAATAATTT	GAACCTTTG	TGAACCTTA	ATTTCCCA	[547]
Arytainilla_nigralineata_T	TAGAACAAAAAT	TCTTGAAAAAT	CAAATAATTT	GAACCTTTG	TGAACCTTA	ATTTCCCA	[547]
Arytainilla_nigralineata_G	TAGAACAAAAAT	TCTTGAAAAAT	CAAATAATTT	GAACCTTTG	TGAACCTTA	ATTTCCCA	[547]
Arytainilla_pileolata_T.can	TAGTACAAAAAT	TCTTGAAAAAT	CAAATAGTTG	AACCTTTGTG	TGAACCTTA	ATTTCCCA	[547]
Arytainilla_pileolata_T.osy	TAGTACAAAAAT	TCTTGAAAAAT	CAAATAGTTG	AACCTTTGTG	TGAACCTTA	ATTTCCCA	[547]
Arytainilla_proboscidea_A.vis_T	TAGCACAAAAAT	TCTTGAAAAAT	CAAATAATTT	GAACCTTTG	TGAACCTTA	ATTTCCCA	[547]
Arytainilla_proboscidea_A.fol_P	TAGCACAAAAAT	TCTTGAAAAAT	CAAATAATTT	GAACCTTTG	TGAACCTTA	ATTTCCCA	[547]
Arytainilla_prognata	TAGTACAAAAAT	TCTTGAAAAAT	CAAATAGTTG	AACCTTTGTG	TGAACCTTA	ATTTCCCA	[548]
Arytainilla_spartiophila_PO	TAGAACAAAAAT	TCTTGAAAAAT	CAAACAATTT	GAACCTTTG	TGAACCTTA	ATTTCCCA	[545]
Arytainilla_spartiophila_SP	TAGAACAAAAAT	TCTTGAAAAAT	CAAACAATTT	GAACCTTTG	TGAACCTTA	ATTTCCCA	[545]
Arytainilla_spartiophila_MO	TAGAACAAAAAT	TCTTGAAAAAT	CAAACAATTT	GAACCTTTG	TGAACCTTA	ATTTCCCA	[545]
Arytainilla_sulci	TAGAAGAAAAAT	TCTTGAAAAAT	CAAATTAATTT	GAACCTTTA	TCTTACTATT	TCTTCTTA	[547]
Arytainilla_umbonata	TAGAACAAAAAT	TCTTGAAAAAT	CAAATAGTTG	AACCTTTGTG	TGAACCTTA	ATTTCCCA	[547]
Arytainilla_sp.1	TAGAACAAAAAT	TCTTGAAAAAT	CAAATAATTT	GAACCTTTG	TGAACCTTA	ATTTCCCA	[549]
Arytainilla_sp.2	TAGAAGAAAAAT	TCTTGAAAAAT	CAAACAATTT	GAACCTTTG	TGAACCTTA	ATTTCCCA	[548]
Arytainilla_sp.3	AAGAAGAAAAAT	TCTTGAAAAAT	CAAGTAAATTT	GAACCTTAT	CATGAACCT	TATTTCCCA	[549]
Arytainilla_sp.4_SP	TAGAAAAAAAT	TCTTGAAAAAT	CAAATAATTT	GAATTAGT	TATGAACCT	TAATTTCCCA	[549]
Arytainilla_sp.4_MO	TAGAAAAAAAT	TCTTGAAAAAT	CAAATAATTT	GAATTAGT	TATGAACCT	TAATTTCCCA	[549]
Arytainilla_sp.5	TAGTACAAAAAT	TCTTGAAAAAT	CAAATAGTTG	AACCTTTGTG	TGAACCTTA	ATTTCCCA	[547]
Arytainilla_sp.6	TACCACAAAAAT	TCTTGAAAAAT	CAAATAGTTG	AACCTTTGTG	TGAACCTTA	ATTTCCCA	[547]
Arytainilla_sp.7	TAGTACAAAAAT	TCTTGAAAAAT	CAAATAGTTG	AACCTTTGTG	TGAACCTTA	ATTTCCCA	[547]
Arytainilla_sp.8	TAGCACAAAAAT	TCTTGAAAAAT	CAAATAATTT	GAACCTTTG	TATGAACCT	TAATTTCCCA	[547]
Arytainilla_sp.9	TAGCACAAAAAT	TCTTGAAAAAT	CAAATAGTTG	AACCTTTGTG	TGAACCTTA	ATTTCCCA	[547]
Arytainilla_sp.10_P	TAGAACAAAAAT	TCTTGAAAAAT	CAAATAGTTG	AACCTTTGTG	TGAACCTTA	ATTTCCCA	[549]
Arytainilla_sp.10_H	TAGAACAAAAAT	TCTTGAAAAAT	CAAATAGTTG	AACCTTTGTG	TGAACCTTA	ATTTCCCA	[549]
Arytainilla_sp.11	TAGAACAAAAAT	TCTTGAAAAAT	CAAATAGTTG	AACCTTTGTG	TGAACCTTA	ATTTCCCA	[547]
Arytainilla_sp.12	TAGTACAAAAAT	TCTTGAAAAAT	CAAATAGTTG	AACCTTTGTG	TGAACCTTA	ATTTCCCA	[547]
Arytainilla_sp.13	TAGCACAAAAAT	TCTTGAAAAAT	CAAATAATTT	GAACCTTTG	TATGAACCT	TAATTTCCCA	[547]
Cacopsylla_alaterni	TTCAAGAAAAAT	TCTTGAAAAAT	CAAATAATTT	GAACCTTTG	TATGAACCT	TAATTTCCCA	[546]
Cacopsylla_mali	TTCAAGAAAAAT	TCTTGAAAAAT	CAAATAATTT	GAACCTTTG	TATGAACCT	TAATTTCCCA	[550]
Cyamophila_prohaskai	TTCAAGAAAAAT	TCTTGAAAAAT	CAAATAATTT	GAACCTTTG	TATGAACCT	TAATTTCCCA	[547]
Livilla_adusta	TAGAACTAAAAT	TCTTGAAAAAT	CAAATAGTTG	AACCTTTGTG	TGAACCTTA	ATTTCCCA	[549]
Livilla_blandula	TAGAACTAAAAT	TCTTGAAAAAT	CAAATAGTTG	AACCTTTGTG	TGAACCTTA	ATTTCCCA	[547]
Livilla_maura	TAGAACTAAAAT	TCTTGAAAAAT	CAAATAGTTG	AACCTTTGTG	TGAACCTTA	ATTTCCCA	[548]
Livilla_monospermae_T	TAGAACAAAAAT	TCTTGAAAAAT	CAAATAGTTG	AACCTTTGTG	TGAACCTTA	ATTTCCCA	[548]
Livilla_monospermae_G	TAGAACAAAAAT	TCTTGAAAAAT	CAAATAGTTG	AACCTTTGTG	TGAACCTTA	ATTTCCCA	[548]
Livilla_monospermae_P	TAGAACAAAAAT	TCTTGAAAAAT	CAAATAGTTG	AACCTTTGTG	TGAACCTTA	ATTTCCCA	[548]
Livilla_retamae	TAGAACAAAAAT	TCTTGAAAAAT	CAAATAATTT	GAACCTTTG	TATGAACCT	TAATTTCCCA	[547]
Livilla_variegata	TAGAACTAAAAT	TCTTGAAAAAT	CAAATAGTTG	AACCTTTGTG	TGAACCTTA	ATTTCCCA	[550]
Livilla_sp.15	TAGAACTAAAAT	TCTTGAAAAAT	CAAATAATTT	GAACCTTTG	TATGAACCT	TAATTTCCCA	[548]
Livilla_sp.16	TAGAACAAAAAT	TCTTGAAAAAT	CAAATAATTT	GAATTTGAT	TATGAACCT	TAATTTCCCA	[547]
Livilla_sp.17	TAGAAAAAAAT	TCTTGAAAAAT	CAAATAATTT	GAACCTTTA	TCTTACTATT	TCTTCTTA	[547]
Pseudacanthopsylla_improvisa	TAGAACAAAAAT	TTTGAAAAAAT	CAAATAATTT	GAACCTTTA	TCTTACTATT	TCTTCTTA	[548]

APPENDIX 3 cont.

[570	580	590	600	610	620	630]
Acizzia_hollisi	ATTATTGCCCTTCGGTCTCTTCAATTTGCTATACTTAATAGATGAAGTAACTAACTCTTTATTAACAATTA						[616]
Acizzia_uncatoides	ATTATTGCACTGCCTTCCCTGCACTTACTCTATTTGATAGATGAGCTGCTCAATCCCATTTTAACTGTAA						[622]
Arytaina_adenocarpi_PO	TTTATTGCTCTCCCATCCCTTCATCTTCTTTATTTAATAGATGAATTAACAATCCCCTATTAACAATCA						[617]
Arytaina_adenocarpi_SP	TTTATTGCTCTCCCATCCCTTCATCTTCTTTATTTAATAGATGAATTAACAATCCCCTATTAACAATCA						[617]
Arytaina_adenocarpi_MO	TTTATTGCTCTCCCATCCCTTCATCTTCTTTATTTAATAGATGAGTAAACAATCCCCTATTAACAATCA						[617]
Arytaina_devia_T	TTTATTGCTCTCCCTCTCTTCATCTTCTTTATTTAATAGATGAATTAACAATCCCCTATTAACAATCA						[619]
Arytaina_devia_G	TTTATTGCWCCWCCACACTWCAACTCTTTATTTAATAGATGAATTAACAATCCCCTATTAACAATTA						[619]
Arytaina_devia_ssp_insularis_C	TTTATTGCACCTTCCCTCCCTTCAACTTCTTTACTTAAATAGATGAAGTAAATAAWCCGCTACTAACAATTA						[618]
Arytaina_devia_ssp_insularis_P	TTTATTGCCCTCCCTTCTCTCCACTCCCTTACTTGATAGATGAATTAACAATCCCCTATTAACAATTA						[620]
Arytaina_genistae_SC	TTTATTGCACCTGCCTTCWCTTCAACTWCTGTACTTAAATAGATGAAGTAAATAAACCCATTTAACAATTA						[616]
Arytaina_genistae_PO	TTTATTGCACCTGCCTTCTCTCATCTTCTTATACTTAAATAGATGAAGTAAATAAACCCATTTAACAATTA						[616]
Arytaina_genistae_MO	TTTATTGCACCTGCCTTCTCTCATCTTCTTATACTTAAATAGATGAAGTAAATAAACCCATTTAACAATTA						[616]
Arytaina_nubivaga	TTTATTGCACCTGCCTTCCCTTCATCTTCTTTATTTAATAGAGCAACTTAATAACCCACTAC????????						[617]
Arytaina_sp.14	TTTATTGCACCTGCCTTCCCTTCATCTTCTTTATTTAATAGAGCAACTTAATAACCCACTAC????????						[617]
Arytainilla_cognata	TTTATTGCTTTACCTCCTTCCACTTCTCTTTCTTATA????????????????????????????						[617]
Arytainilla_cytisi	TTTATTGCACCTGCCTTCACTTCTTCTTACTTCTTATAGATGAATTAACAATCCCCTTTAACAATTA						[619]
Arytainilla_delarbrei	TTTATTGCCTTTACCTTCTCTCATATCTTTATCTTATA????????????????????????????						[621]
Arytainilla_diluta_C	TTTATTGCTTACCTCCTTCCACTTCCACTTTTATACCTTATA????????????????????????						[617]
Arytainilla_diluta_T	TTTATTGCTTACCTCCTTCCACTTCCACTTTTATACCTTATA????????????????????????						[617]
Arytainilla_dividens_C	TTTATTGCCCTACCGTCACTTCCACTTCTATATTTAATA????????????????????????????						[617]
Arytainilla_dividens_T	TTTATTGCCCTACCGTCACTTCCACTTCTTCTATATTTAATA????????????????????????						[617]
Arytainilla_dividens_G	TTTATTGCCCTACCGTCACTTCCACTTCTTCTATATTTAATA????????????????????????						[617]
Arytainilla_equitans	TTTATTGCCCTACCGTCACTTCCACTTCTTCTATATTTAATA????????????????????????						[617]
Arytainilla_hakani	TTTATTGCTTTACCATCACTTCCACTTCTTACTTATAGATGAAGTAAATAAACCCACTTCAACAATTA						[617]
Arytainilla_ima	TTTATTGCACCTGCCTTCCCTTCATCTTCTTTACTTATAGAGCAACTTAATAACCCCTTTAACAATTA						[617]
Arytainilla_incuba	TTTATTGCTTTGCCCTCCTTCCACTTCCACTTCTTACTTATAGATGAAGTAAATAAACCCACTTCAACAATTA						[617]
Arytainilla_modica_Teline_P	TTTATCGCCCTACCTTCCACTTCCACTTCTTATATTTAATAGAGCAACTTAATAACCCACTAC????						[617]
Arytainilla_modica_Cham_P	TTTATCGCCCTACCTTCCACTTCCACTTCTTATATTTAATA????????????????????????						[617]
Arytainilla_modica_Teline_H	TTTATTGCCCTACCTTCCACTTCCACTTCTTATATTTAATAGAGCAACTTAATAACCCACTACT????						[617]
Arytainilla_modica_Cham_H	TTTATTGCCCTACCTTCCACTTCCACTTCTTATATTTAATA????????????????????????						[617]
Arytainilla_nigralineata_C	TTTATTGCATTACCGTCACTTCCACTTCTTATATTTAATA????????????????????????						[617]
Arytainilla_nigralineata_T	TTTATTGCATTACCGTCACTTCCACTTCTTATATTTAATA????????????????????????						[617]
Arytainilla_nigralineata_G	TTTATTGCATTACCGTCACTTCCACTTCTTATATTTAATA????????????????????????						[617]
Arytainilla_pileolata_T.can	TTTATTGCTTTGCCCTCCTTCCACTTCCACTTCTTCTATAA????????????????????????						[617]
Arytainilla_pileolata_T.osy	TTTATTGCTTTGCCCTCCTTCCACTTCCACTTCTTCTATAA????????????????????????						[617]
Arytainilla_proboscidea_A.vis_T	TTTATTGCTTTACCATCACTTCCACTTCTTATACTTATAGATGAAGTAAATAAACCCACTTAAACAATTA						[617]
Arytainilla_proboscidea_A.fol_P	TTTATTGCTTTACCATCACTTCCACTTCTTATACTTATAGATGAAGTAAATAAACCCACTTAAACAATTA						[617]
Arytainilla_prognata	TTTATTGCTTTACCATCACTTCCACTTCTTATACTTATAGATGAAGTAAATAAACCCACTTAAACAATTA						[618]
Arytainilla_spartiophila_PO	TTTATTGCATTACCGTCACTTCCACTTCTTATATTTAATA????????????????????????						[615]
Arytainilla_spartiophila_SP	TTTATTGCATTACCGTCACTTCCACTTCTTATATTTAATA????????????????????????						[615]
Arytainilla_spartiophila_MO	TTTATTGCATTACCGTCACTTCCACTTCTTATATTTAATA????????????????????????						[615]
Arytainilla_sulci	TTTATTGCCCTTCCCTTCCACTTCCACTTCTTCTATAA????????????????????????						[617]
Arytainilla_umbonata	TTTATTGCATTACCTTCCACTTCCACTTCTTCTACTTATAGATGAAGTAAATAAACCCACTTCAACAATTA						[617]
Arytainilla_sp.1	TTTATTGCTTTCGCTTCCCTTACACTTCTTCTATCTTATAGATGAAGTAAATAAACCCACTTTAACAATTA						[619]
Arytainilla_sp.2	TTTATCGCATTCGCTTCCCTTACACTTCTTCTATCTTATAGAGCAACTTAATAACCCCTTTAACAATTA						[618]
Arytainilla_sp.3	TTTATTGCACACCGTCACTTCCACTTCTTATATTTAATA????????????????????????						[619]
Arytainilla_sp.4_SP	TTTATTGCTTTCCTTCCCTTACACTTCTTATACTTAAATAGATGAAGTAAATAAACCCCTTTAACAATTA						[619]
Arytainilla_sp.4_MO	TTTATTGCTTTCCTTCCCTTACACTTCTTATACTTAAATAGATGAAGTAAATAAACCCCTTTAACAATTA						[619]
Arytainilla_sp.5	TTTATTGCCCTACCTACCTCCCTCTCTTTTCTTATA????????????????????????						[617]
Arytainilla_sp.6	TTTATTGCTTTGCCCTTCCCTTCCACTTCTTACTTATA????????????????????????						[617]
Arytainilla_sp.7	TTTATTGCTTTACCTTCCACTTCCACTTCTTCTTATAA????????????????????????						[617]
Arytainilla_sp.8	TTTATCGCTTACCTTCCACTTCCACTTCTTCTACTTATAA????????????????????????						[617]
Arytainilla_sp.9	TTTATCGCTTACCTTCCACTTCCACTTCTTCTACTTATAA????????????????????????						[617]
Arytainilla_sp.10_P	TTTATTGCCCTCCCTTCCACTTCCACTTCTTATACTTAAATAGAGCAACTTAATAACCCACT????						[619]
Arytainilla_sp.10_H	TTTATTGCCCTCCCTTCCACTTCCACTTCTTATACTTAAATAGAGCAACTTAATAACCCACT????						[619]
Arytainilla_sp.11	TTTATTGCTTACCTTCCACTTCCACTTCTTCTACTTATAGATGAAGTAAATAAACCCACTTTAACAATTA						[617]
Arytainilla_sp.12	TTTATTGCCCTACCTTCCACTTCCACTTCTTCTATATTTAATA????????????????????						[617]
Arytainilla_sp.13	TTTATTGCTTTACCTTCCACTTCCACTTCTTATACTTAAATAGATGAAGTAAATAAACCCACTTCAACAATTA						[617]
Cacopsylla_alaterni	TTTATTGCACCTCCCTTCCACTTCCACTTCTTATACTTAAATAGATGAAGTAAATAAACCCGCTTTAACAATTA						[616]
Cacopsylla_mali	TTTATTGCACCTCCCTTCCACTTCCACTTCTTATACTTAAATAGATGAAGTAAATAAACCCCTTWSAACAATTA						[620]
Cyamophila_prohaskai	TTTATTGCCCTCCCTCCTTCCACTTCCACTTCTTATACTTAAATAGATGAAGTAAATAAACCCCTTTAACAATTA						[617]
Livilla_adusta	TTTATCGCCCTCCCTTCCACTTCCACTTCTTATACTTAAATAGATGAAGTAAATAAACCCCTTTAACAATTA						[619]
Livilla_blandula	TTTATTGCTTCCCTTCCACTTCCACTTCTTCTATATTTAATA????????????????????						[617]
Livilla_maura	TTTATTGCCCTCCCTCCTTCCACTTCCACTTCTTATACTTAAATAGATGAAGTAAATAAACCCCTTTAACAATTA						[618]
Livilla_monospermae_T	TTTATTGCTTCCCTTCCACTTCCACTTCTTATACTTAAATAGATGAAGTAAATAAACCCCTTTAACAATTA						[618]
Livilla_monospermae_G	TTTATTGCTTCCCTTCCACTTCCACTTCTTATACTTAAATAGATGAAGTAAATAAACCCCTTTAACAATTA						[618]
Livilla_monospermae_P	TTTATTGCTTCCCTTCCACTTCCACTTCTTATACTTAAATAGATGAAGTAAATAAACCCCTTTAACAATTA						[618]
Livilla_retamae	TTTATTGCTTCCCTTCCACTTCCACTTCTTATACTTAAATAGATGAAGTAAATAAACCCCTTACTAACAATTA						[617]
Livilla_variegata	TTTATTGCTTCCCTTCCACTTCCACTTCTTATACTTAAATAGATGAAGTAAATAAACCCCTTTAACAATTA						[620]
Livilla_sp.15	TTTATTGCTTCCCTTCCACTTCCACTTCTTATACTTAAATAGATGAAGTAAATAAACCCCTTTAACAATTA						[618]
Livilla_sp.16	TTTATTGCTTCCCTTCCACTTCCACTTCTTATACTTAAATAGATGAAGTAAATAAACCCCTTTAACAATTA						[617]
Livilla_sp.17	TTTATTGCTTCCCTTCCACTTCCACTTCTTATACTTAAATAGATGAAGTAAATAAACCCCTTTAACAATTA						[617]
Pseudacanthopsylla_improvisa	TTTATTGCCCTCCCTTCCACTTCCACTTCTTATACTTAAATAGATGAAGTAAATAAACCCCTTTAACAATTA						[618]

APPENDIX 3 cont.

[]
[]
	COII 298bp end]	
Acizzia_hollisi	AAATTTTAG	[625]
Acizzia_uncatoides	AAATTATAG	[631]
Arytaina_adenocarpi_PO	AAATTATCG	[626]
Arytaina_adenocarpi_SP	AAATTATCG	[626]
Arytaina_adenocarpi_MO	AAATTATCG	[626]
Arytaina_devia_T	AAATTATTG	[628]
Arytaina_devia_G	AAATTATTG	[628]
Arytaina_devia_ssp_insularis_C	AAATTATTG	[627]
Arytaina_devia_ssp_insularis_P	AAATTATTG	[629]
Arytaina_genistae_SC	AAATTATTG	[625]
Arytaina_genistae_PO	AAATTATTG	[625]
Arytaina_genistae_MO	AAATTATTG	[625]
Arytaina_nubivaga	?????????	[626]
Arytaina_sp.14	?????????	[626]
Arytainilla_cognata	?????????	[626]
Arytainilla_cytisi	AAATTATTG	[628]
Arytainilla_delarbrei	?????????	[630]
Arytainilla_diluta_C	?????????	[626]
Arytainilla_diluta_T	?????????	[626]
Arytainilla_dividens_C	?????????	[626]
Arytainilla_dividens_T	?????????	[626]
Arytainilla_dividens_G	?????????	[626]
Arytainilla_equitans	AAGTAATTG	[626]
Arytainilla_hakani	AAGTAATCG	[626]
Arytainilla_ima	AAATTATTG	[626]
Arytainilla_incuba	AAGTAATCG	[626]
Arytainilla_modica_Teline_P	?????????	[626]
Arytainilla_modica_Cham._P	?????????	[626]
Arytainilla_modica_Teline_H	?????????	[626]
Arytainilla_modica_Cham._H	?????????	[626]
Arytainilla_nigralineata_C	AAGTAATTG	[626]
Arytainilla_nigralineata_T	AAGTAATTG	[626]
Arytainilla_nigralineata_G	AAGTAATTG	[626]
Arytainilla_pileolata_T.can	?????????	[626]
Arytainilla_pileolata_T.osy	?????????	[626]
Arytainilla_proboscidea_A.vis_T	AAGTAATTG	[626]
Arytainilla_proboscidea_A.fol_P	AAGT?????	[626]
Arytainilla_prognata	AAGTAATTG	[627]
Arytainilla_spartiophila_PO	?????????	[624]
Arytainilla_spartiophila_SP	?????????	[624]
Arytainilla_spartiophila_MO	?????????	[624]
Arytainilla_sulci	AAATTATTG	[626]
Arytainilla_umbonata	AAGTAATCG	[626]
Arytainilla_sp.1	AAATCATTG	[628]
Arytainilla_sp.2	AAATCATTG	[627]
Arytainilla_sp.3	AAATTATTG	[628]
Arytainilla_sp.4_SP	AAATTATTG	[628]
Arytainilla_sp.4_MO	AAATTATTG	[628]
Arytainilla_sp.5	?????????	[626]
Arytainilla_sp.6	?????????	[626]
Arytainilla_sp.7	AAGTAATCG	[626]
Arytainilla_sp.8	?????????	[626]
Arytainilla_sp.9	?????????	[626]
Arytainilla_sp.10_P	?????????	[628]
Arytainilla_sp.10_H	?????????	[628]
Arytainilla_sp.11	AAGTAATTG	[626]
Arytainilla_sp.12	?????????	[626]
Arytainilla_sp.13	AAGTAATCG	[626]
Cacopsylla_alaterni	AAATTATTG	[625]
Cacopsylla_mali	WAWTTTCS	[629]
Cyamophila_prohaskai	AAATTATTG	[626]
Livilla_adusta	?????????	[628]
Livilla_blandula	AGATTATTG	[626]
Livilla_maura	AAATTATTG	[627]
Livilla_monospermae_T	AAATTATCG	[627]
Livilla_monospermae_G	AAATTATCG	[627]
Livilla_monospermae_P	?????????	[627]
Livilla_retamae	AAATTATCG	[626]
Livilla_variegata	AAATTATTG	[629]
Livilla_sp.15	AAATTAT??	[627]
Livilla_sp.16	AAATCATTG	[626]
Livilla_sp.17	AAATTATTG	[626]
Pseudacanthopsylla_improvisa	?????????	[627]

APPENDIX 4. *List of 67 morphological characters and character states.*

Adult

1. *Forewing shape*: **(0)** widest in the apical third with a broadly rounded apex; **(1)** widest in the middle third with more acutely rounded apex; **(2)** margins more or less parallel, apex broadly rounded or more acute.
2. *Forewing costal break*: **(0)** absent; **(1)** present.
3. *Forewing pterostigma*: **(0)** absent; **(1)** present.
4. *Forewing vein pigmentation*: **(0)** uniformly coloured; **(1)** with distinct light and dark banding; **(2)** with dark patches at the terminal apices.
5. *Termination of vein Rs at the forewing apex*: **(0)** strongly curved towards the wing margin; **(1)** not, or only weakly curved towards the wing margin.
6. *Surface forewing spinules density*: **(0)** sparse: less than 40 per 0.1 mm²; **(1)** medium density: 40-60 per 0.1 mm²; **(2)** dense: 60-100 per 0.1 mm²; **(3)** very dense: more than 100 per 0.1 mm².
7. *Shape of hindwing costal margin*: **(0)** straight; **(1)** slightly concave; **(2)** markedly concave.
8. *Genal cones position*: **(0)** commencing dorsally from more or less the same level as the vertex; **(1)** commencing ventrally relative to the vertex, with a distinct depression between the vertex and the genal cones.
9. *Genal cones terminal setae length*: **(0)** as long as, or typically longer than the vertex; **(1)** typically shorter than the vertex, occasionally as long.
10. *Genal cones terminal setae colour*: **(0)** darkly pigmented; **(1)** not darkly pigmented.
11. *Metatarsal spur*: **(0)** absent; **(1)** one; **(2)** two.
12. *Male paramere shape*: **(0)** with an apically thin neck above a medially positioned blade or ridge produced on the external side and directed anteriorly; **(1)** apically thin neck typically absent or very short, without a medial blade but with a terminal ridge or blade present laterally exterior to the apex; **(2)** broad and parallel sided, lacking medial or apical blade; **(3)** slender, often simple with sides parallel or tapering towards the apex, lacking medial or apical blade.
13. *Male paramere sclerotized apex in lateral view*: **(0)** rounded with small or more pronounced, anteriorly or interiorly directed hook; **(1)** flattened or more or less so, with slight or more pronounced anterior projection; **(2)** either flattened or with a well rounded bulge, and with slight anterior and posterior projections; **(3)** small, not hooked but sometimes with small anterior projection, and displaced either to the interior or posterior of

the top of the paramere.

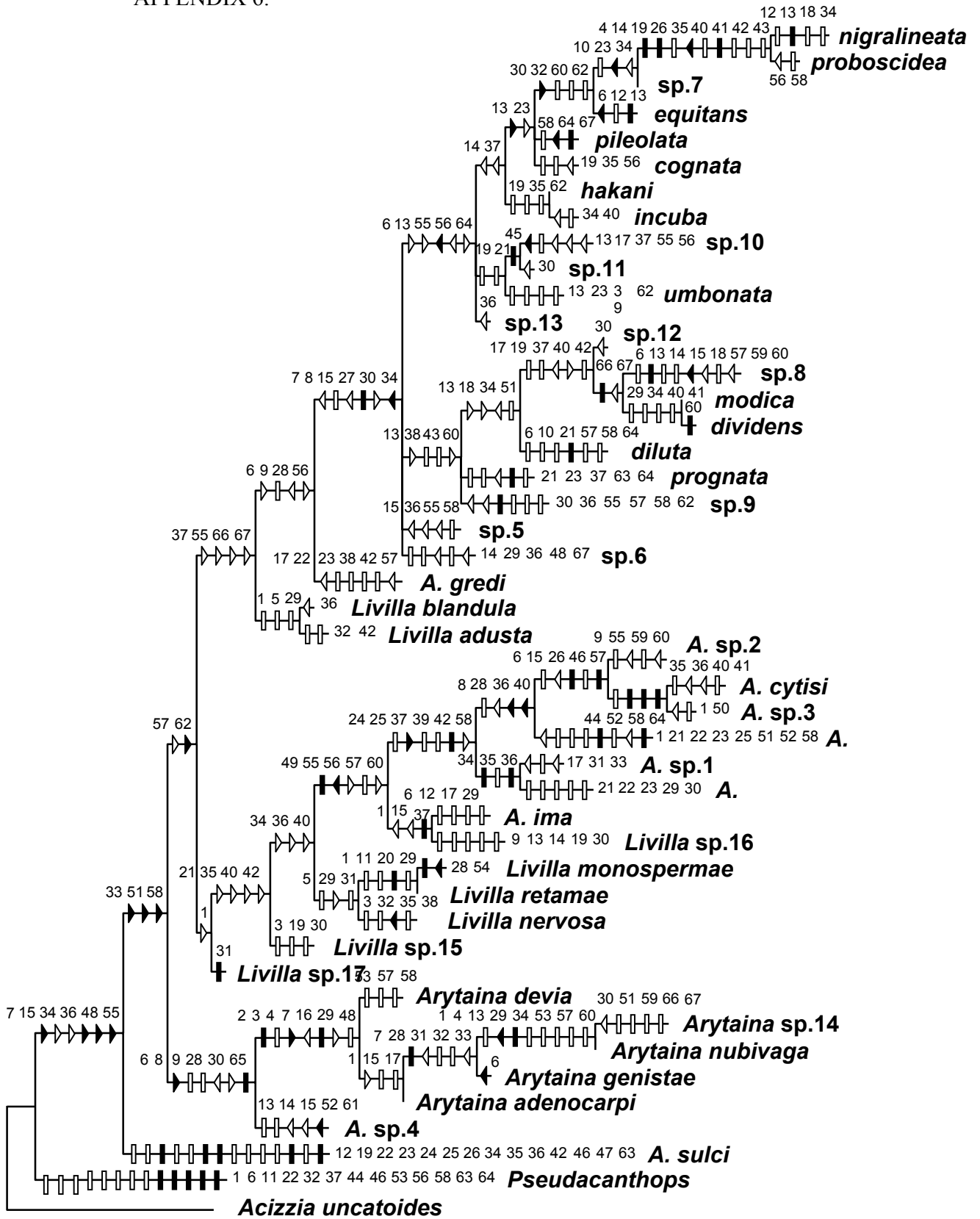
14. *Male paramere sclerotized apex in dorsal view*: **(0)** contiguous anteriorly; **(1)** contiguous more or less along entire inner margin; **(2)** contiguous posteriorly.
15. *Male paramere sclerotized apex inner surface in dorsal view*: **(0)** straight edged; **(1)** concave; **(2)** rounded with an acute point.
16. *Male proctiger apex*: **(0)** with pronounced posterior extension apically; **(1)** without pronounced posterior extension apically.
17. *Male aedeagus distal segment apex*: **(0)** with a well developed, curved hook; **(1)** with a somewhat flattened, shallow hook; **(2)** not developed into a hook.
18. *Tip of male aedeagus hook*: **(0)** turning upwards; **(1)** not turning upwards.
19. *Male subgenital plate dorsal profile*: **(0)** more or less straight and horizontal; **(1)** raised anteriorly, either with or without a distinct step.
20. *Male subgenital plate dorsal posterior margin*: **(0)** with a pair of long (more than half the length of the paramere) stout setae; **(1)** without a pair of long stout setae.
21. *Female proctiger dorsal profile*: **(0)** more or less straight from anus to apex; **(1)** with a post anal depression, and subsequently more or less straight, or slightly concave or convex; **(2)** without a post anal depression, and concave with an upturned apex.
22. *Female proctiger apex*: **(0)** squarely truncated; **(1)** bluntly rounded; **(2)** acute.
23. *Female subgenital plate ventral profile*: **(0)** shallowly curved, without medial bulge but sometimes angled medially; **(1)** slight, or more pronounced medial bulge; **(2)** deeply curved, without medial bulge.
24. *Female ovipositor*: **(0)** valvulae ventralis slender, height of valvulae dorsalis typically as great or greater than valvulae ventralis; **(1)** valvulae ventralis robust, height of valvulae dorsalis less than valvulae ventralis.
25. *Female ovipositor valvulae dorsalis shape*: **(0)** dorsally convex, wedge-shaped and tapering to the apex; **(1)** dorsally concave, and distinctly inflated anteriorly; **(2)** more or less straight, with or without dorsal tooth-like processes; **(3)** triangular, tapering both to the apex and anteriorly.
26. *Female ovipositor valvulae ventralis apex*: **(0)** rounded, often acutely so, lacking any serration; **(1)** rounded with minute serrations that extend along the ventral margin; **(2)** stepped with square tip; **(3)** rounded with two small ventral processes near the tip.
27. *Forewing pterostigma length*: **(0)** short, less than one 20th the wing length (ratio wing length:pterostigma length equal to or more than 20); **(1)** medium, less than one quarter of

- the wing length (ratio wing length:pterostigma length 4.5-20); **(2)** long, about one quarter of the wing length (ratio wing length:pterostigma length equal to or less than 4.5).
28. *Genal cone length*: **(0)** short to very short, 0.15 mm or less (up to half the length of the vertex); **(1)** long, 0.15 - 0.3 mm (roughly the same length as the vertex); **(2)** very long, more than 0.3 mm (about 1.5 times the length of the vertex).
29. *Antennal length*: **(0)** very short, less than 1 mm; **(1)** short, 1 to 1.5 mm; **(2)** medium, 1.5 - 2 mm; **(3)** long, more than 2 mm.
30. *Distal proboscis segment length*: **(0)** up to 0.14 mm; **(1)** 0.14 to 0.2 mm; **(2)** 0.2 to 0.3 mm; **(3)** 0.3 mm or more.
31. *Ratio forewing length to width*: **(0)** less than 2.2; **(1)** 2.2-2.6; **(2)** greater than 2.6.
32. *Ratio hind leg tibia length to femur length*: **(0)** up to 1; **(1)** 1 to 1.26; **(2)** 1.26 or more.
33. *Ratio hind leg apical tarsus to tibia length*: **(0)** up to 0.22; **(1)** 0.22 to 0.33; **(2)** 0.33 or more.
34. *Male proctiger length*: **(0)** 0.3 mm or less; **(1)** 0.3-0.4 mm; **(2)** 0.4-0.5 mm; **(3)** 0.5 mm or greater.
35. *Male paramere length*: **(0)** very short, less than 0.25 mm; **(1)** short, 0.25 to 0.4 mm; **(2)** mid-length, greater than 0.4 but less than 0.55 mm; **(3)** long, greater than 0.55 mm.
36. *Male aedeagus length*: **(0)** up to 0.26 mm; **(1)** 0.26 to 0.37 mm; **(2)** 0.37 to 0.47 mm; **(3)** 0.47 mm or more.
37. *Male aedeagus hook*: **(0)** small, 0.08 mm or less; **(1)** medium, 0.08-0.13 mm; **(2)** large, greater than 0.13 mm.
38. *Ratio male subgenital plate length to height*: **(0)** up to 1.3; **(1)** 1.3 to 1.55; **(2)** 1.55 or more.
39. *Ratio male paramere length to subgenital plate height*: **(0)** 1 or less; **(1)** 1 to 1.4; **(2)** 1.4 or greater.
40. *Female proctiger length*: **(0)** less than 0.5 mm; **(1)** 0.5 to 0.85 mm; **(2)** 0.85 to 1 mm; **(3)** 1 mm or greater.
41. *Female subgenital plate length*: **(0)** less than 0.35 mm; **(1)** 0.35 to 0.7 mm; **(2)** greater than 0.7 mm.
42. *Female ventral ovipositor valve length*: **(0)** up to 0.2 mm; **(1)** 0.2 to 0.35 mm; **(2)** 0.35 mm or more.
43. *Ratio female proctiger length to circumanal ring length*: **(0)** 4 or less; **(1)** greater than 4.
- 5th instar nymph**
44. *Forewing pad and abdomen apically*: **(0)** acute; **(1)** broadly rounded.

45. *Antennal segments*: **(0)** seven; **(1)** eight; **(2)** nine.
46. *Circumanal ring shape*: **(0)** broadly crescent-shaped with well rounded anterior lobes; **(1)** narrowly crescent-shaped with well rounded anterior lobes, but with lateral margins either straight or slightly concave; **(2)** narrowly crescent-shaped with acutely rounded anterior lobes.
47. *Body length*: **(0)** up to 2 mm; **(1)** 2 mm or more.
48. *Antennal length*: **(0)** up to 0.63 mm; **(1)** 0.63 to 0.88 mm; **(2)** 0.88 to 1.18 mm; **(3)** 1.18 mm or more.
49. *Ratio forewing pad length to head width*: **(0)** 1 or less; **(1)** greater than 1.
50. *Ratio caudal plate width to length*: **(0)** less than 1.2; **(1)** greater than 1.2.
51. *Ratio caudal plate width to circumanal ring width*: **(0)** up to 4; **(1)** 4 to 5; **(2)** 5 or more.
52. *Head setae*: **(0)** simple, occasionally narrowly capitate; **(1)** simple and distinctly capitate; **(2)** simple and club-shaped; **(3)** simple and sectasetae.
53. *Antennal setae*: **(0)** simple; **(1)** simple and capitate; **(2)** simple and club-shaped; **(3)** sectasetae.
54. *Ocular seta*: **(0)** absent; **(1)** simple, or narrowly capitate or rod; **(2)** distinctly capitate; **(3)** sectasetae.
55. *Secondary post-ocular seta*: **(0)** absent or indistinct; **(1)** prominent, simple, sometimes narrowly capitate; **(2)** prominent, distinctly capitate, occasionally narrow.
56. *Dorsal thoracic setae*: **(0)** simple only; **(1)** capitate present; **(2)** club setae; **(3)** sectasetae.
57. *Dorsal prominent pre-caudal setae placement*: **(0)** absent or indistinct; **(1)** prominent, on anterior tergites; **(2)** prominent, on posterior tergites; **(3)** prominent, on all tergites.
58. *Forewing pad setae*: **(0)** simple only; **(1)** capitate only; **(2)** simple and capitate; **(3)** club-shaped; **(4)** sectasetae.
59. *Forewing pad prominent setae*: **(0)** marginal; **(1)** surface and marginal.
60. *Forewing pad prominent setae*: **(0)** one; **(1)** two; **(2)** more than two.
61. *Abdominal sectasetae*: **(0)** absent; **(1)** present.
62. *Abdominal sectasetae*: **(0)** one pair; **(1)** two pairs; **(2)** three pairs; **(3)** four pairs; **(4)** more than four pairs.
63. *Marginal abdominal setae (other than sectasetae)*: **(0)** absent; **(1)** one pair; **(2)** two pairs; **(3)** three or four pairs; **(4)** more than four pairs.
64. *Leg setal type*: **(0)** simple setae only; **(1)** capitate setae present; **(2)** club-shaped setae present; **(3)** sectasetae present.

65. *Foreleg tibia number of distinct setal type: (0) one; (1) two; (2) more than two.*
66. *Middle leg tibia number of distinct setal type: (0) one; (1) two; (2) more than two.*
67. *Hind leg tibia number of distinct setal type: (0) one; (1) two; (2) more than two.*

APPENDIX 6.



Appendix 6. Phylogram of morphological data (strict consensus of 18 trees) showing unambiguous character state changes: black symbols = unique changes, white symbols = parallel changes; bars indicate apomorphic states, and arrows the direction of character change.

Opposite page:

APPENDIX 5.

Matrix of 67 morphological characters and character states.

Inapplicable or missing characters are indicated by '-' and '?' respectively.